

SIRONAUSA.COM



# CAD/CAM FOR EVERYONE



Sirona Dental, Inc.  
4835 Sirona Drive  
Charlotte, NC 28273

SIRONAUSA.COM

The Dental Company

**sirona.**

The Dental Company

**sirona.**



# WHY CAD/CAM?

Traditional dental procedures, like physical impressions and temporary bridges, certainly leave a lot to be desired, especially in the eyes of the patient. Today's consumers want more from their dental experience. They expect technology to play a central role in their care, and they want the fewest visits they can manage.

CAD/CAM technology enables the very things patients are looking for: a more comfortable treatment experience, and one that allows them to go about their daily lives with as little interruption as possible. It comes down to comfort and time, two important things we can all benefit having more of.

## HOW SATISFIED ARE YOU WITH YOUR MOST RECENT CROWN PROCEDURE?

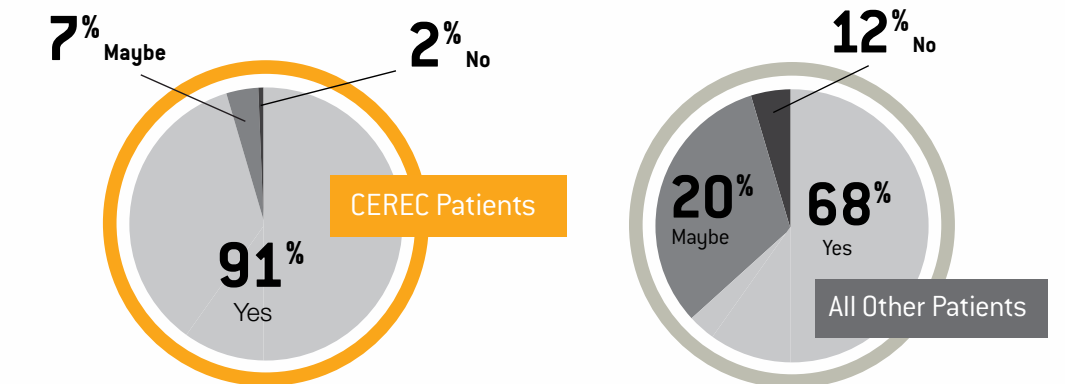


# WHY NOW?

For the first time ever—and only from Sirona—there's now a complete range of both digital impressioning systems and single-visit chairside restoration systems to choose from, each available in a wide range of configurations and price points to fit the framework of any practice and any budget.

Whether replacing physical impressions with digital impressions, or giving patients the opportunity to have their restorative work completed in a single visit with chairside milling, CAD/CAM for Everyone means there is a perfect solution for your practice and for your patients.

## HOW WILLING ARE YOU TO REFER YOUR FRIENDS AND FAMILY TO YOUR DENTIST?





WHERE DO YOU SEE

I NEED  
TO STAY  
CURRENT

THE WORLD  
IS MOVING  
TO DIGITAL

I'M HAPPY  
WITH MY  
PRACTICE

YOUR PRACTICE GOING?

I BELIEVE  
THERE IS  
SOMETHING  
BETTER

MY  
PATIENTS  
EXPECT  
MORE

I'M READY TO  
DELIVER A  
BETTER  
EXPERIENCE

# CAD/CAM FOR EVERYONE

CAD/CAM technology enables the very things patients are looking for. Whether replacing physical impressions with digital impressions, or getting their restorative work completed in one single visit with chairside milling, CAD/CAM for Everyone means there is a perfect solution for your practice, and your patients.

Get started with  
Chairside CAD/CAM for  
as low as \$79,995.

## Digital Impressioning

APOLLO DI



**\$19,750 or  
\$399 per month**

CEREC® AC CONNECT  
WITH BLUECAM



**\$25,995 or  
\$526 per month**

CEREC® AC CONNECT  
WITH OMNICAM



**\$49,995 or  
\$1,012 per month**

## Chairside Solutions

CEREC® AC WITH  
BLUECAM + CEREC MC



**\$79,995  
or \$1,620 per month**

CEREC® AC WITH  
OMNICAM + CEREC MC



**\$109,995  
or \$2,175 per month**

CEREC® AC WITH  
OMNICAM + CEREC MC X



**\$129,995  
or \$2,570 per month**

Only in the US. Pricing is subject to change without notice and does not include sales tax and freight, where applicable. Monthly payment is an estimate only and individual payments may vary. Monthly payment is subject to change.

All combinations of units are available. Speak with your Patterson representative about individual unit pricing.

# CLINICAL WORKFLOW AND EFFICIENCY AT PEAK PERFORMANCE

Logistics and back-office operations mean a lot to you. You want your office to work like clockwork: streamlined, efficient and uncomplicated. That's where Sirona digital impressioning comes into the picture.

Incorporating digital impressions into your workflow streamlines efficiencies and further strengthens the relationship you have with your lab — after all, you have a great relationship with your lab and want to keep it that way. In addition, you'd rather leave the restoration production and artistry to your lab tech.

With Sirona digital impressioning, your lab still does the design and production work, but you enjoy the time- and money-saving benefits of not having to use impression trays or messy material. And patients are more comfortable too. You realize digital dentistry is vital to staying competitive and relevant, and digital impressions achieve that perfectly and without fundamentally altering the way you work, which is very important to you.



# DIGITAL IMPRESSIONING SYSTEMS FROM SIRONA

Simplicity right from the start, with a system that's right for any office.

APOLLO DI



- Most cost-effective entry into digital impressioning
- Small, lightweight and precise camera
- Simple and intuitive scanning
- Export restoration designs directly to your lab for fabrication

CEREC® AC CONNECT WITH BLUECAM



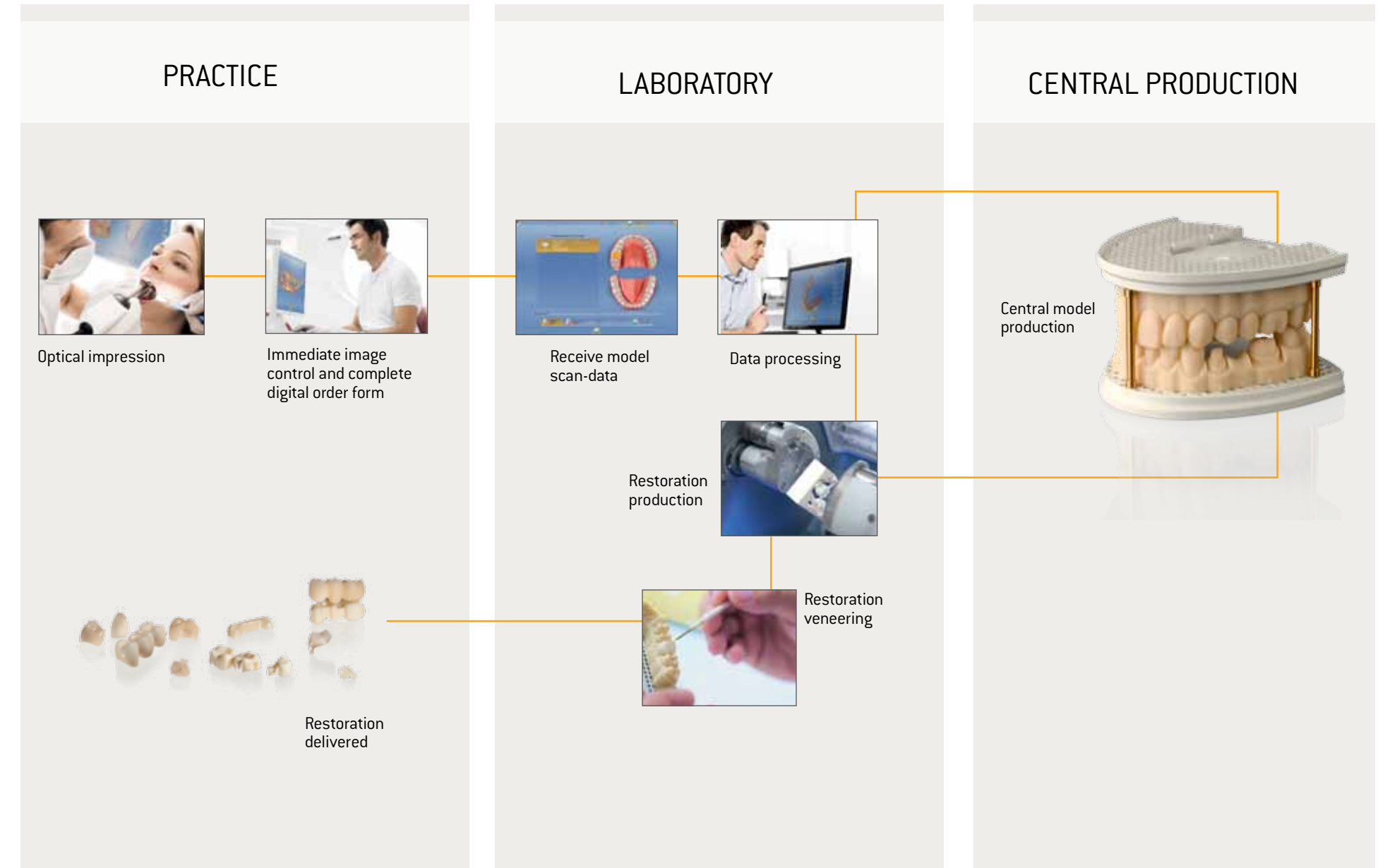
- High precision, reliable and efficient optical impressions
- Quick scanning of powder-coated surfaces
- Export restoration designs directly to your lab for fabrication

CEREC® AC CONNECT WITH OMNICAM



- Powder-free impressions for ultimate ease-of-use
- Impeccably precise 3D images in natural color
- Intuitive operation and fast scanning
- Rounded camera tube for easy camera rotation and increased operator comfort
- Export restoration designs directly to your lab for fabrication

# THE SIRONA CONNECT PROCESS IN DETAIL





# EXCEED EXPECTATIONS WITH CEREC® BY YOUR SIDE

Single-visit dentistry with CEREC gives you complete control over every restoration you make. You don't want to worry if your case will fit properly, or if the shade will match when it gets back from the lab... and thanks to CEREC, you don't have to.

Maximizing your profit potential is important to you, too, as it's a sign of successful, growing practice. Enhancing production and growing your patient base by offering convenient and comfortable single-visit restorations is equally important. You understand that patient loyalty is what keeps them coming back, and with CEREC at your side, loyalty comes with the territory.

# SINGLE-VISIT CHAIRSIDE SOLUTIONS

## CEREC® AC WITH OMNICAM

CEREC AC with Omnicam has the capability to accomplish virtually any clinical situation you may encounter with speed and simplicity. Whether you're restoring a single tooth, or confronted with the complexity of a full-smile rehabilitation, CEREC AC with Omnicam "does it all."

Quite simply the most perfect  
CAD/CAM camera ever.

### Designed for Access

Rounded camera tube allows easy rotation of the camera and increases operator comfort. The tiny camera tip guarantees the best intraoral access.

### ColorStreaming for Confidence

Scanning with CEREC Omnicam is very intuitive and easy to learn. The result is in full color, bringing a whole new dimension to realism and clinical confidence.

### Powder Free for Convenience

CEREC Omnicam requires no powder or opaquing agent. This simplifies the learning curve and makes the scanning process convenient and fast, yet retains the highest level of precision to meet Sirona's industry-leading standards.

Powder  
Free



Proven  
Technology

## CEREC® AC WITH BLUECAM

When single-unit dentistry is what you do most, CEREC AC with Bluecam is your partner in productivity.

CEREC AC with Bluecam is dentistry's all-time best-selling chairside CAD/CAM system, and is the ideal solution for any practice wishing to balance precision with maximum productivity.

### Proven Technology

CEREC Bluecam—the world's all-time best-selling digital impression camera—got that way in no small part to setting new standards in optical precision. This unprecedented degree of accuracy comes from the powerful blue light-emitting diode with a specific wavelength designed to capture every detail for impeccable results.

### Single-unit powerhouse

Optimized for tirelessly producing highly-precise single-unit restorations: crowns, inlays, onlays and veneers.

### Productivity to the max

CEREC AC with Bluecam is the ideal solution for any practice wishing to balance precision with maximum productivity.



MILLING UNITS:

# PRACTICAL AND PRECISE RESTORATION FABRICATION

## CEREC® MC



The economical entry to producing chairside restorations.

CEREC MC is a perfect fit for single-unit restoration fabrication including crowns, inlays, onlays and veneers. Block sizes up to 20mm.



## CEREC® MC X



For dentists who want to do more than single units.

CEREC MC X can produce everything the MC can, with the additional capability to mill abutments, surgical guides, bridges and other multiple-unit restorations from a wide range of materials such as glass ceramics, lithium disilicate and translucent zirconium oxide in block sizes up to 40mm.



## CEREC® MC XL PRACTICE LAB



For the practice that wants maximum flexibility.

When it comes to lab-side restorations such as bridge frameworks, customized implant abutments, surgical guides, telescopes, bars and attachments—MC XL can literally do it all. For the dentist who appreciates total control, CEREC MC XL is the answer. Block sizes up to 85mm.



CEREC® SOFTWARE

# STREAMLINED AND INTUITIVE RESTORATION DESIGN PROCESS

From start to finish, CEREC Software visually guides you through each step of the way to clinical and esthetic excellence.

## STEP 1 SCAN



## STEP 2 DESIGN

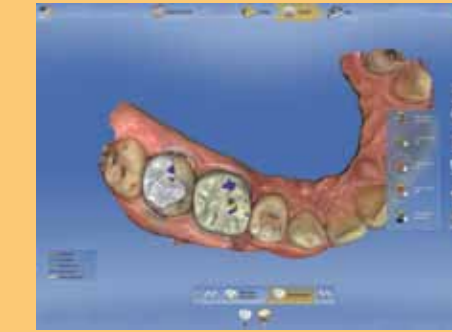


## STEP 3 MILL THE RESTORATION AND SEAT



## POWERFUL NEW SOFTWARE TOOLS

### VIRTUAL ARTICULATION



In addition to the static contact surfaces, the articulator function allows you to determine the dynamic contact surfaces and improve the correct functional occlusion.

### SMILE DESIGN



Construction and consultation in one: Digital 2D photos of your patient can be uploaded to the software with the smile design button. Now they are virtually combined with the 3D construction data. This allows you and your patients to preview the final result.

### IMPLANT ABUTMENTS



Place implants chairside – in a single session. For this, scan the scanbodies on the placed implants directly in the patient's mouth, then design screw-retained crowns or customized abutments and mill using the chairside material of your choice.

# IMAGE ACQUISITION SYSTEMS

## Capabilities comparison at-a-glance

	APOLLO DI	CEREC® BLUECAM	CEREC® OMNICAM
Imaging technique	Continuous imaging	Single image acquisition	Continuous color imaging
Area of application	Single tooth, quadrant	Single tooth, quadrant [full jaw possible]	Single tooth, quadrant, full-jaw
Dimensions	Overall length: 220mm Length of camera sleeve: 64mm Height and width of the tip: 18.5 x 23mm	Overall length: 206mm Length of camera sleeve: 86mm Height and width of the tip: 22 x 17mm	Overall length: 228mm Length of camera sleeve: 108mm Height and width of the tip: 16 x 16mm
Weight	100g	270g	313g
Clearance/depth of field	The camera is moved closely between 2-20mm over the tooth surface	The camera can be placed directly on the teeth	The camera is moved closely between 0-15mm over the tooth surface
Can be combined with all Sirona milling units	–	■	■
Patient counseling mode	–	–	■
3D scans in color	–	–	■
No powder coating required	–	–	■
Open data*	■	■	■
No charge for using Sirona Connect: [Transmission of impression data to an external laboratory]	■	■	■

\* Impression data can be processed with the aid of inLab software (Sirona Connect). Export inLab design data via the OPEN inLab interface.

# MILLING UNITS

## Capabilities comparison at-a-glance

	CEREC® MC	CEREC® MC X	CEREC® MC XL Practice Lab
Indications	Fully anatomic single-tooth restorations	Fully anatomic single-tooth restorations	Fully anatomic single-tooth restorations
Milling accuracy	±25µm	±25µm	±25µm
Maximum block size	15.5 x 19 x 20mm	15.5 x 19 x 40mm	15.5 x 40 x 85mm
Touch display	–	–	■
<b>CEREC Software</b>	■	■	■
Fully anatomic single-tooth restorations [feldspar ceramics, glass ceramic, lithium disilicate ceramic, translucent zirconium oxide [TZI], hybrid, mono-sized polymer blocks]	■	■	■
Bridges up to 4 units	–	■	■
Abutments	–	■	■
CEREC Guide surgical guides	–	■	■
<b>inLab® software</b>	–	□	■
Copings, frameworks, bars, attachments, telescopes, multilayer, stack-milling, nesting	–	□	■
Metal	–	□	■
Milling of zirconium oxide and polymers	–	□	■
Frameworks up to 12 units	–	–	■
Model milling [Design 2011 motors necessary]	–	–	■
Four spindle motors	–	–	■

□ Optional



# CAD/CAM FOR ME

CALL YOUR  
PATTERSON REP  
FOR MORE INFO

Your Patterson representative will help answer any questions and guide you through the process of getting started with Sirona's chairside and digital impressing systems.

**800.873.7683**

---

SCHEDULE  
AN IN-OFFICE  
DEMO

A CEREC specialist will visit your practice with your requested chairside or digital impressing systems to walk you through a live hands-on demonstration.

**800.873.7683**

---

ATTEND A  
CEREC® ACCEPT  
PROGRAM

At our ACCEPT programs you'll get to know the ins and outs of our chairside and digital impressing systems and get hands-on experience with our master trainers.

**CERECaccept.com**