

# AdheSE®

SELF-ETCHING  
UNIVERSAL ADHESIVE



Now bonding takes place ...  
**with light** and **without light!**

**ivoclar** .  
**vivadent**®  
passion vision innovation

# AdheSE®

## Self-etching, dual-curing, filled two-component adhesive system for enamel and dentin

The self-etching adhesive system AdheSE owes its popularity to its many different applications. Together with the new DC Activator, AdheSE now allows you to cover all the indications of adhesive dentistry.

Because AdheSE does not involve phosphoric acid etching or preliminary polymerization with light, it has revolutionized routine dental procedures. AdheSE helps to save time and money and reduces postoperative sensitivity to a minimum.

### Reduction of postoperative sensitivity

All the dentin areas that have been demineralized are penetrated by the monomers of AdheSE. This good infiltration substantially reduces the risk of postoperative sensitivity.

### Indications

#### without DC Activator



- light-curing composite, ceromer and compomer restorations
- after light-curing of the bonding agent for core build-ups with dual or self-curing composites

#### with DC Activator



- indirect restorations and root posts
- direct restorations with dual or self-curing composites (eg Isopast)
- core build-ups with dual or self-curing composites (eg MultiCore)

# The universal adhesive

## 1 AdheSE Primer



The clear colour coding – green for the primer, black for the bonding agent, white for the DC Activator – prevents confusion of the components. The pictograms on the pad are easy to follow and understand.



+++ universal applications +++ saves time and money +++ eas

that really saves time

AdheSE Bond

2



AdheSE DC Activator

3

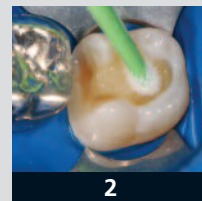
optional



### Indirect restorations



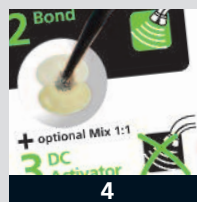
1  
Preoperative view  
after preparation



2  
Apply AdheSE Primer  
for 30 s



3  
Disperse primer with a  
strong stream of air



4  
Mix equal amounts  
of AdheSE Bond and  
DC Activator



5  
Apply activated bonding  
agent and place restoration  
with dual-curing luting  
composite



6  
The result



The ideal supplement to light-curing applications: Mixed in a 1:1 ratio, DC Activator activates the bonding agent.

easy and clean handling +++ reduces postoperative sensitivity +++ no refrigeration needed +++

# FINISHED

## Direct restorations



Preoperative view



Apply AdheSE Primer for 30 s



Disperse primer with a strong stream of air



Rub in AdheSE Bond



Light-cure the bonding agent for 10 s



The result

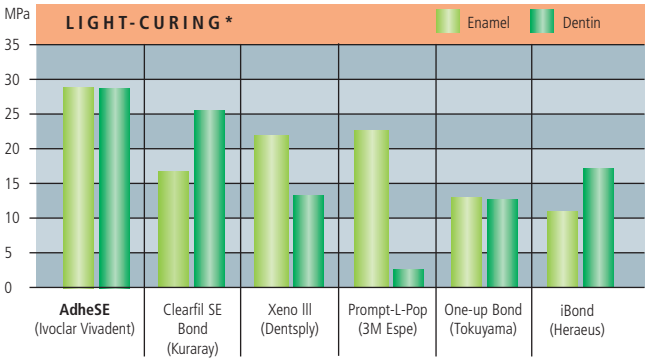


## Technique tolerance

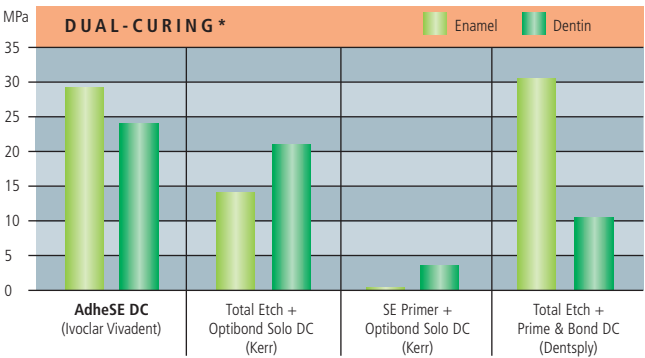
AdheSE is insensitive towards different surface conditions on dentin. The performance of the primer remains unchanged on dry or moist dentin and even if it is distributed with a strong stream of air.

## Bonding values

AdheSE generates a bond immediately – the initial bonding values on dentin and enamel are of particular importance to prevent the build-up of tension. AdheSE exhibits an outstanding capacity for generating these favourable initial bonding values.



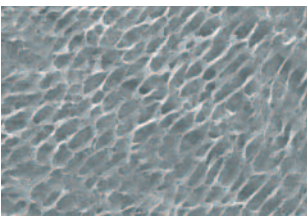
AdheSE generates constant high bonding values on enamel and dentin.



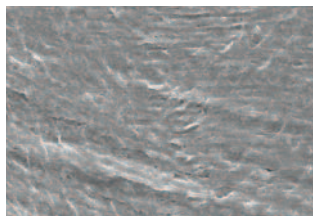
\*Shear bond values after 24-hour in-house tests recorded by R&D Ivoclar Vivadent AG, Schaan, Liechtenstein

## Bond

Because of its low pH chemistry, AdheSE produces a well-defined etch pattern, which forms the basis for an optimum enamel bond.



Well-defined enamel etch pattern achieved with AdheSE



Faint enamel etch pattern produced with Product B

# AdheSE®

## SELF-ETCHING UNIVERSAL ADHESIVE

### AdheSE delivery forms Single bottles

#### Intro Pack

1 x 5 g Primer  
1 x 5 g Bond  
1 x AdheSE Pad  
25 applicators each in green  
and black



### AdheSE delivery forms DC Activator

#### Dual Cure System Pack

1 x 5 g Primer  
1 x 5 g Bond  
1 x 5 g DC Activator  
1 x AdheSE DC Pad  
25 applicators each in  
green and black



#### Refill 1 x 5 g Primer



#### Refill 1 x 5 g Bond



#### Refill 1 x 5 g Primer 1 x 5 g Bond



#### Pad Refill 1 x AdheSE Pad



#### Refill 1 x 5 g DC Activator



#### Pad Refill 1 x AdheSE DC Pad



#### Applicator Refill 1 x 25 green applicators 1 x 25 black applicators

