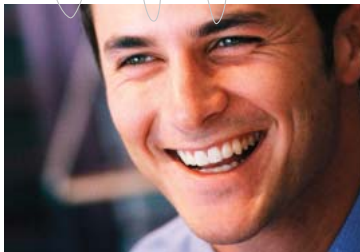


Revolutionary tray simplifies your way to a better impression.



Put away that messy tray adhesive once and for all. Here is an impression tray that does not need it. Leave it to 3M to find a product from another 3M division that will cause impression materials to cling to the tray.

As written by Dr. Joe Blaes in the January 2004 issue of Dental Economics



3M ESPE's New Directed Flow Impression Tray completes state-of-the-art impression system.

Innovative, single-use tray eliminates the need for a tray adhesive, simplifying both preliminary *and* final impressions.

- Eliminates the need for a tray adhesive: no more unpleasant odor or mess.
- Saves time — up to five minutes per procedure.
- Increases patient comfort.
- Offers excellent stability.
- Helps to simplify inventory.
- Single use for improved infection control.
- Provides outstanding quality, accurate results and easy handling.

For over 30 years, dentists have depended on 3M ESPE brands to provide the highest quality impression materials and delivery systems. We introduced the first cartridge dispensed vinyl polysiloxane impression material and revolutionized impressioning with the introduction of Impregum™ Polyether Impression Material.

In 1993, the Pentamix™ Mixing Unit revolutionized impression taking. It set new standards in quality, practice and innovation. Today, it has become the most successful and most frequently used automatic mixing system in the world.

Today, the 3M™ ESPE™ Directed Flow Impression Tray rounds out the first complete

impression system by 3M ESPE, making both preliminary *and* final impression-taking processes easier and faster than ever before. For innovation, reliability and accuracy, depend on 3M ESPE for all your impression material needs.

3M™ ESPE™ DIRECTED FLOW IMPRESSION TRAY IMPRESSION INDICATIONS

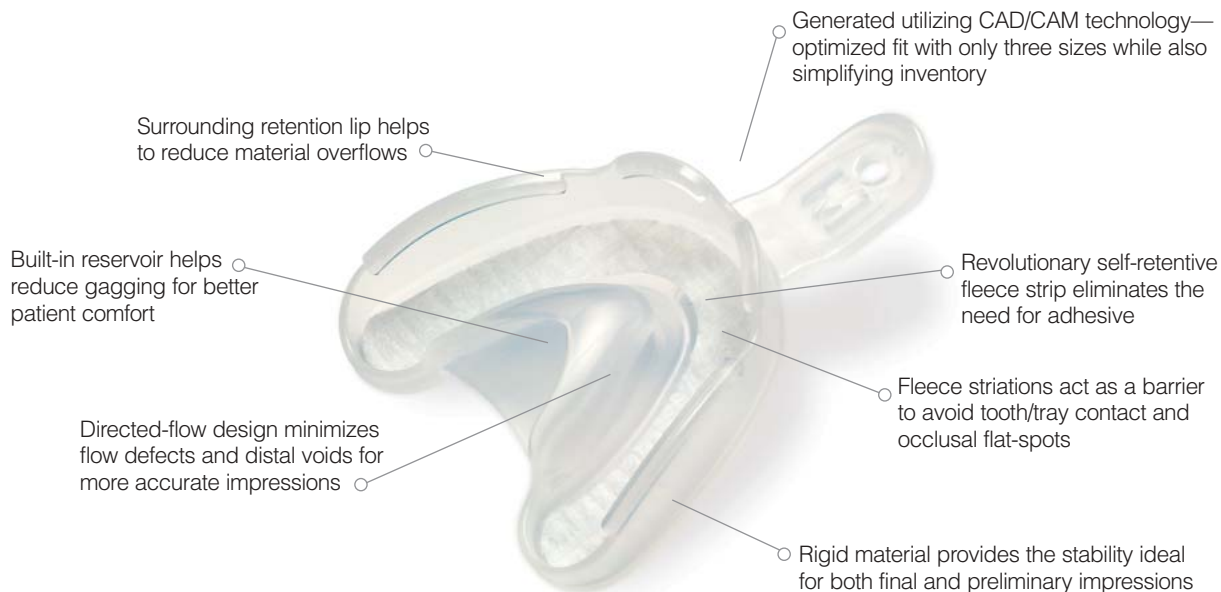
Preliminary Impressions	Final Impressions
Counter models	Crown procedures
Study models	Bridge procedures
Matrix for temporary crowns and bridges	
Orthodontic models	
Bleaching trays	
Mouthguards	
Fabrication of splints	

3M ESPE's New Directed Flow Impression Tray: a revolution in impression taking



Key Features

The new, single-use 3M™ ESPE™ Directed Flow Impression Tray simplifies the impression-taking process. Innovative tray features provide outstanding quality, accurate results and easy handling to help save both time and costs. Integrate the 3M ESPE Directed Flow impression tray into your practice and begin reaping the benefits of this innovative impression-taking system:



Ordering Information



**3M ESPE Directed Flow
Impression Tray Refill Pack**

Item Number	Product Information
3M ESPE Directed Flow Impression Tray Refill Pack — Upper	
71615	10 Trays, Size Small (S), Upper
71616	10 Trays, Size Medium (M), Upper
71617	10 Trays, Size Large (L), Upper
3M ESPE Directed Flow Impression Tray Refill Pack — Lower	
71618	10 Trays, Size Small (S), Lower
71619	10 Trays, Size Medium (M), Lower
71620	10 Trays, Size Large (L), Lower

For More Information

To learn more about adding the 3M ESPE impression system to your practice, contact your 3M ESPE authorized distributor.

Technical Hotline: 1-800-634-2249 www.3MESPE.com

Impregum™
Polyether Impression
Materials

Imprint™
Vinyl Polysiloxane
Impression Materials

Position™
Penta™ Quick Preliminary
Impression Material

Pentamix™
Mixing Unit

3M ESPE

Dental Products

3M Center
Building 275-2SE-03
St. Paul, MN 55144-1000
USA

3M Canada

Post Office Box 5757
London, Ontario N6A 4T1
Canada
1-800-265-1840 ext. 6229

10% post-consumer
waste paper
Printed in USA
© 3M 2003

3M, ESPE, Impregum, Imprint,
Penta, Pentamix, and Position are
trademarks of 3M or 3M ESPE AG.
70-2009-3610-5