



ParaPost®
ParaCore automix
dual cure core material

The Rock Solid Core Material

- Cuts Like Dentin
- Ideal Consistency
- Outstanding Strength



**NEW CONVENIENT
5 ML SYRINGES!**

coltène 
whaledent®

CUTS LIKE DENTIN

Preparation bur moves smoothly from natural tooth substance to core material without creating troughs or grooves which are time consuming to repair.

IDEAL CONSISTENCY

The non-slumping stackable consistency allows the build-up of the core either free-hand or with the assistance of ParaForm core forms.

DUAL CURED

Light curing allows immediate core preparation, while chemical cure assures complete curing where the light might not penetrate.

NEW

THE ECONOMICAL 5 ML AUTOMIX SYRINGE

- ✓ No dispenser needed
- ✓ Small mixing tips, up to 80 % less waste compared to cartridge systems
- ✓ Automatic mixing and precise direct application
- ✓ ParaBond™ Adhesive Free in Introduction Kit

ADDITIONAL BENEFITS

- ✓ Can be used as a post cement and core material (monoblock)
- ✓ Fluoride release
- ✓ Radiopaque
- ✓ Two shades (white and dentin)
- ✓ Choice of delivery systems:
 25 ml cartridge and 5 ml syringe

PARAFORM CORE-FORMERS

- ✓ Quick and easy core build up
- ✓ Plastic, Disposable, Single Use
- ✓ Easy to Place, Cut, Trim and Remove
- ✓ Numeric Coding in 10 Sizes
- ✓ Included Free in ParaCore Introduction Kit



STEP-BY-STEP CORE BUILD UP

by PD Dr. Stefan J. Paul, DDS - University of Zurich



1. Application of ParaBond® Adhesive Conditioner.



2. Application of a small amount ParaCore automix to coat the tooth surface.



3. Filling of ParaForm core-former directly from ParaCore automix mixing tip.

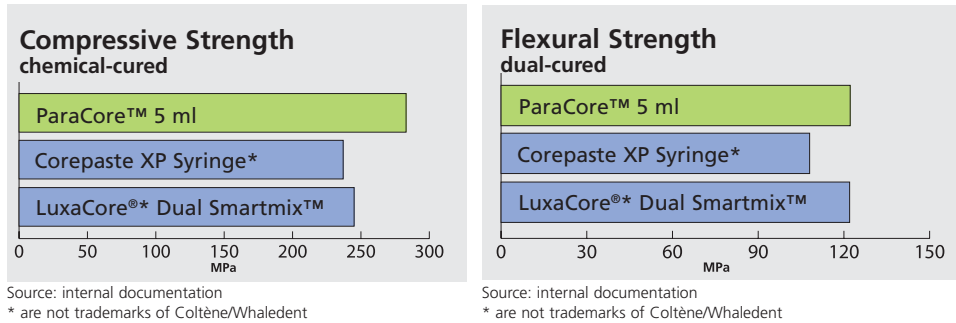


4. Placing of ParaForm core-former on the tooth.

The simple path to a strong foundation

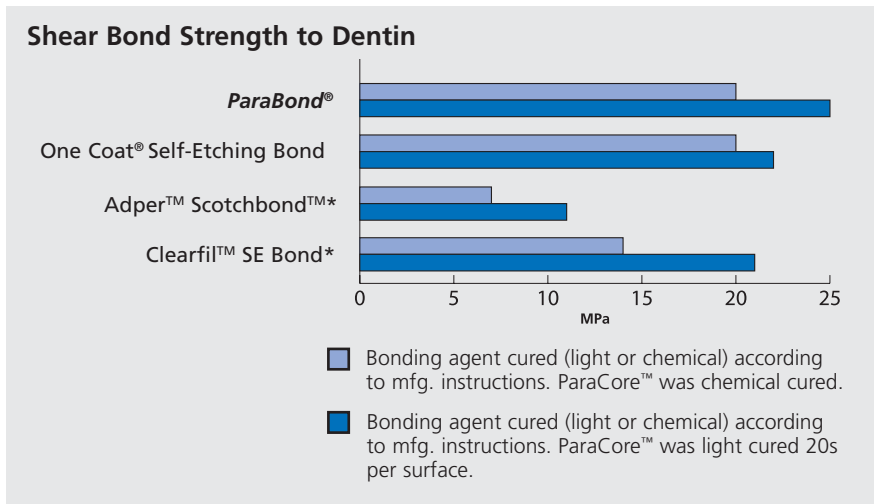
GREATER STRENGTH

The ParaCore™ automix material is based on a proprietary formula utilizing proven glass particle technology. These glass particles increase the strength of the core over conventional materials.



PARACORE™ + PARABOND® = EXCELLENT RETENTION

Using ParaBond® Adhesive with ParaCore™ provides excellent retention to dentin and enamel, ensuring a long lasting restoration. This bond strength is achieved using ParaBond® Non-Rinse Conditioner with ParaBond® Adhesive. Since ParaBond® is chemical cured, it is ideal for situations where light might not penetrate, such as in post cementation.



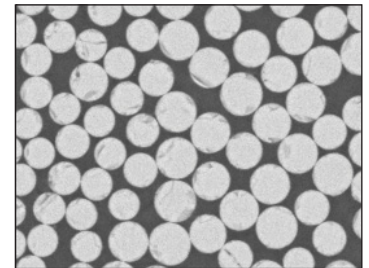
SUPERIOR ESTHETICS

ParaPost® Fiber Lux is an alternative to metal posts when esthetic or metal-free restoration is desired. Fiber Lux is made of translucent fiber resin material that reflects the natural hues of the tooth, and eliminates shadows through composite restorations and at the gingival/crown interface.

Material Composition

Glass Fiber	60 %
Resin	40 %

SUPERIOR STRENGTH



Cross Section of Fiber Lux Post

The high percentage of uni-directional fibers gives the Fiber Lux post excellent strength characteristics, without compromising flexibility.

Physical Properties

Flexural Strength	1600 MPa
Compressive Strength	630 MPa



5. Removal of ParaForm core-former with a scalpel.



6. Finished core build-up after fine contouring.



7. Cemented crown using ParaCem® Universal DC Cement.





Order Information

ParaCore automix cartridge

C5855 ParaCore automix Intro-Kit white
 25 ml ParaCore automix white, Dispenser
 25 ml, 20 Mixing Tips, 20 Intra Oral Tips,
 2.5 ml Etchant Gel S, 3 ml Adhesive
 Conditioner A, 3 ml Adhesive Conditioner B,
 10 Assorted coreformers, Accessories

C5856 ParaCore automix Intro-Kit dentin

25 ml ParaCore automix dentin, Dispenser
 25 ml, 20 Mixing Tips, 20 Intra Oral Tips,
 2.5 ml Etchant Gel S, 3 ml Adhesive Condi-
 tioner A, 3 ml Adhesive Conditioner B,
 10 Assorted coreformers, Accessories

C5853 ParaCore automix Single dentin

25 ml ParaCore dentin, 20 Mixing Tips,
 20 Intra Oral Tips

C5854 ParaCore automix Single white

25 ml ParaCore white, 20 Mixing Tips,
 20 Intra Oral Tips

C6550 Mixing Tips

40 x MT/YELLOW/CLEAR/WHITE/69/S*

C6555 Oral Tips

100 Intra Oral Tips

C4470 Dispenser 25ml

ParaCore automix syringe

C5885 ParaCore automix 5 ml Intro-Kit
 2 x 5 ml ParaCore automix syringe white
 2 x 5 ml ParaCore automix syringe dentin
 1 x 3 ml ParaBond® Non-Rinse Conditioner
 1 x 3 ml ParaBond® Adhesive A
 1 x 3 ml ParaBond® Adhesive B
 20 x Mixing Tips with Oral Tips
 1 x ParaPost® ParaForm™ Trial Kit

C5886 ParaCore automix 5 ml white Refill

2 x 5 ml ParaCore automix syringe white
 20 x Mixing Tips with Oral Tips

C5887 ParaCore automix 5 ml dentin Refill

2 x 5 ml ParaCore automix syringe dentin
 20 x Mixing Tips with Oral Tips

C6759 Mixing Tips

MT/BROWN/CLEAR/WHITE/43/WITH OT*

C7486 ParaBond® Adhesive Refill

1 x 3 ml Non-Rinse Conditioner
 1 x 3 ml Adhesive A
 1 x 3 ml Adhesive B

ParaPost® Fiber Lux

One-Office Visit Introductory Kit:

PF 170 2 Posts, size 3, Ø 0.90 mm
 1 Drill, size 3
 3 Posts, size 4, Ø 1.00 mm
 1 Drill, size 4
 3 Posts, size 4.5, Ø 1.14 mm
 1 Drill, size 4.5
 3 Posts, size 5, Ø 1.25 mm
 1 Drill, size 5
 2 Posts, size 5.5, Ø 1.40 mm
 1 Drill, size 5.5
 2 Posts, size 6, Ø 1.50 mm
 1 Drill, size 6
 1 Universal Hand Driver

ParaPost® Fiber Lux Refills (5 posts/refill):

PF 171 3 Size 3
PF 171 4 Size 4
PF 171 4.5 Size 4.5
PF 171 5 Size 5
PF 171 5.5 Size 5.5
PF 171 6 Size 6

ParaPost® ParaForm coreformer

P5860 ParaForm Complete Set

50 assorted coreformers in 10 sizes

P5861 ParaForm Sample Kit

10 assorted coreformers

P5871 ParaForm Refill # 1

10 coreformers size 1

P5872 ParaForm Refill # 2

10 coreformers size 2

P5873 ParaForm Refill # 3

10 coreformers size 3

P5874 ParaForm Refill # 4

10 coreformers size 4

P5875 ParaForm Refill # 5

10 coreformers size 5

P5876 ParaForm Refill # 6

10 coreformers size 6

P5877 ParaForm Refill # 7

10 coreformers size 7

P5878 ParaForm Refill # 8

10 coreformers size 8

P5879 ParaForm Refill # 9

10 coreformers size 9

P5880 ParaForm Refill # 10

10 coreformers size 10



*MT = Mixing Tip, WITH OT = Oral Tip

Coltène/Whaledent Inc.

235 Ascot Parkway
 Cuyahoga Falls, Ohio 44223 / USA
 Tel. USA & Canada 1 800 221 3046
 +1 330 916 8800

Fax +1 330 916 7077
 info@coltnewhaledent.com

Coltène/Whaledent AG

Feldwiesenstrasse 20
 9450 Altstätten/Switzerland
 Tel. +41 (0)71 757 53 00
 Fax +41 (0)71 757 53 01

office@coltnewhaledent.ch

Coltène/Whaledent GmbH + Co. KG

Raiffeisenstrasse 30
 89129 Langenau / Germany
 Tel. +49 (0) 7345 805 0
 Fax +49 (0) 7345 805 201

productinfo@coltnewhaledent.de

Coltène/Whaledent website:

<http://www.coltnewhaledent.com>

