

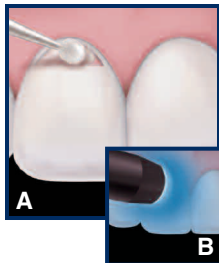
Available in  
Syringe and  
Compula™ tip  
deliveries



### 1. Etch

(when using Prime & Bond<sup>®</sup> NT™ Adhesive)

Apply Caulk<sup>®</sup> 34% Tooth Conditioner Gel to the prepared and rinsed tooth. Condition the enamel for at least 15 seconds, and the dentin for 15 seconds or less. Rinse the etchant gel for 10 seconds. Blot dry to remove excess moisture. Dentin should be moist and glistening.

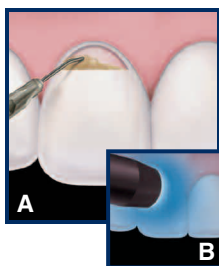


### 2. Bonding

- Apply Prime & Bond NT Adhesive to the preparation and saturate all surfaces for at least 20 seconds.
- Remove excess solvent by gently air drying for 5 seconds.

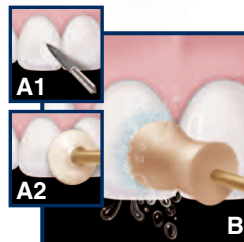
**Surfaces should have a uniform, glossy appearance. Light cure for 10 seconds.** If not glossy, repeat steps 2A and 2B.

*NOTE: Self-etch adhesives such as Xeno<sup>®</sup> III Adhesive or Xeno<sup>®</sup> IV Adhesive may also be used.*



### 3. Place and Cure Flowable

- Place Esthet•X<sup>®</sup> Flow Liquid Micro Hybrid in the preparation. Place in increments, up to 2mm deep. Esthet•X Flow Liquid Micro Hybrid's ideal handling allows for controlled placement in Class Vs.
- Light cure each increment of Esthet•X Flow Liquid Micro Hybrid for 20 seconds.



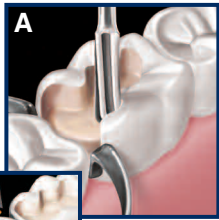
### 4. Finish and Polish

- Define the final anatomy with a carbide or diamond finishing bur, followed by Enhance<sup>®</sup> Discs or Cups.
- Polish restoration with the PoGo<sup>®</sup> One Step Diamond Micro-Polisher System and/or Prisma<sup>®</sup>•Gloss™ Polishing Pastes.

Esthet•X<sup>®</sup> Flow's smart, pseudoplastic handling stays put in a Class V and hugs the prepared anatomy in a Class II.

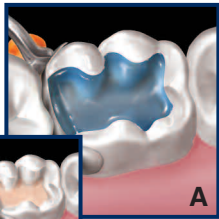
**\*\*NEW shades available:  
Bleach, A2-0, C4**





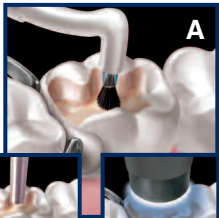
## 1. Preparation and Matrix Placement

- Place Palodent® BiTine® Ring prior to cavity preparation.
- With BiTine Ring in place, prepare and rinse the tooth.
- Remove the BiTine Ring and place the Palodent sectional matrix. Close the gingival margin by placing an anatomical wedge.
- Replace the Palodent BiTine Ring.



## 2. Etching (when using Prime & Bond® NT™ Adhesive)

- Using Caulk® 34% Tooth Conditioner Gel, etch enamel for at least 15 seconds and the dentin for 15 seconds or less.
- Rinse etch gel for 10 seconds. Blot dry. **Dentin should be moist and glistening.**



## 3. Bonding

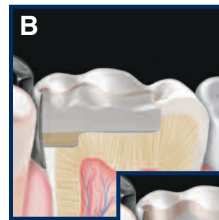
- Apply Prime & Bond® NT™ Adhesive and **saturate all surfaces for at least 20 seconds.**
- Remove excess solvent by gently air drying for 5 seconds. Surfaces should have a uniform, glossy appearance.
- Light cure for 10 seconds. If not glossy, repeat steps 3A and 3B.

**NOTE:** Self-etch adhesives such as Xeno® III Adhesive or Xeno® IV Adhesive may also be used.



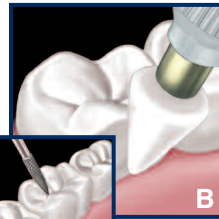
## 4. Placement of Flowable Layer

- Place a 0.5-1mm layer of Esthet•X® Flow material.
- For the Class II liner indication, all shades should be light cured for **40 seconds.**



## 5. Placement of Restorative

- Fill the proximal box with Esthet•X®, TPH®3, SureFil® or QuiXX® Restoratives according to the manufacturers *Directions for Use*. Continue to fill cavity prep up to the dentin-enamel junction.
- An Esthet•X® Restorative Translucent Enamel Shade may be used to replace the enamel portion of the tooth (up to 2mm). Sculpt and contour anatomy. Light cure 20 seconds.



## 6. Finishing

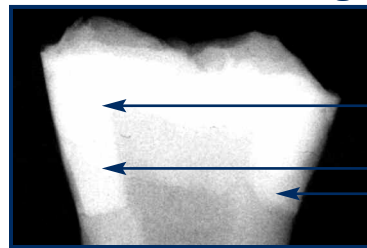
- Define the final anatomy with a carbide or diamond finishing bur.
- Finish the restoration with Enhance® Finishing Cups or Points. Start finishing with a medium pressure and slowly back off to a light pressure.



## 7. Polishing

- For a glass-like luster, polish the restoration with the PoGo® One Step Diamond Micro-Polisher System and/or Prisma®•Gloss™ Polishing Pastes.

## Esthet•X® Flow Radiograph



**Esthet•X Flow material is highly radiopaque and easy to see on a radiograph.**

Esthet•X®

Esthet•X® Flow  
Aelitflo™