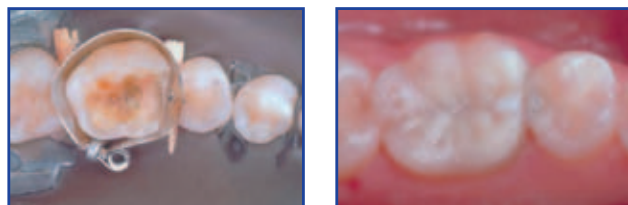


# AutoMatrix®

## Retainerless Matrix System

Ideal for larger preparations and those that have buccal or lingual extensions.



### Retainerless System

- Clear field of vision, access for quadrant work, better patient comfort

### Conical formation

- Better anatomical adaptation helping to avoid restorative overhang

### Torque control of Automate® III tightening device

- Limits over-tensioning, less adjustment needed

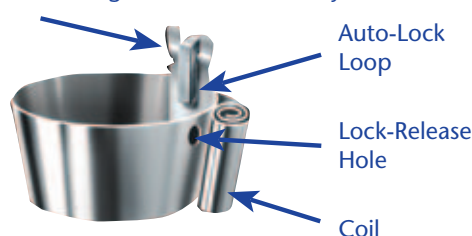
### Pre-loaded bands

- Save time, less steps

Four different matrix bands are available for all situations:

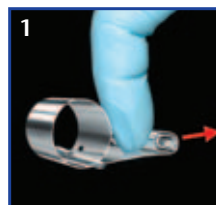
Type	Narrow/ Regular (NR)	Medium/ Thin (MT)	Medium/ Regular (MR)	Wide/ Regular (WR)
Height (mm)	4.76	6.35	6.35	7.94
Thickness (mm)	0.05	0.038	0.05	0.05
Clinical uses	short bicuspid & molars	bicuspid/ molars	bicuspid/ molars	long molars

Thin-Gauge Bands Identified by Notch Here



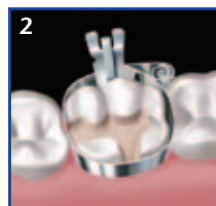
### Step by Step

To properly fit tooth, matrix should be slightly larger than occlusal circumference.



### Preparation

Unroll coil slightly with finger. Slide the auto-lock against the coil.



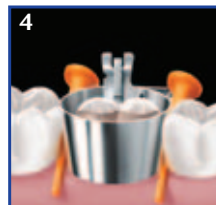
### Placement

Position it with the auto-lock loop at the center of the buccal or lingual... or the remaining section of standing tooth.



### Tightening

Insert Automate III tip into coil and rotate knurled handle clockwise. After 2 to 3 clicks, stop.



### Tooth Restoration

Place anatomical wedges as desired. Burnish contact areas as needed. Restore tooth.



### Release and Removal

Rotate winding tip of Automate III counterclockwise (1/4 turn). To open the matrix, clip projecting end of Auto-Lock loop.

## ORDERING INFORMATION

	For EU	For US
<b>AutoMatrix® Introductory Package</b>		
96 Bands (24 of each size)		
1 Automate® III Tightening Device, Snippers	<b>624.22.501</b>	<b>663032</b>
<b>AutoMatrix® Refills</b> (72 pieces each)		
NR: Narrow-Regular	<b>624.22.511</b>	<b>663002</b>
MT: Medium-Thin	<b>624.22.510</b>	<b>663001</b>
MR: Medium-Regular	<b>624.22.512</b>	<b>663003</b>
WR: Wide-Regular	<b>624.22.513</b>	<b>663004</b>
<b>AutoMatrix® Accessories</b>		
Snippers	<b>624.22.601</b>	<b>663006</b>
Automate® III Tightening Device	<b>624.22.602</b>	<b>663100</b>
Extra Shaft Assembly	<b>624.22.603</b>	<b>663016</b>
Repair Set for Snippers/ Snipper Shield Assembly Package	<b>963010</b>	<b>663007</b>

**DENTSPLY Caulk**  
38 West Clarke Avenue  
Milford, DE 19963  
USA  
www.dentsply.com  
www.caulk.com

**DENTSPLY DeTREY GmbH**  
De-Trey-Str. 1  
78467 Konstanz  
Germany  
www.dentsply.de



For better dentistry

**DENTSPLY**

# Palodent®

The original contoured sectional matrix system.

Nothing is as quick and easy for perfect contacts.



### BiTine® Placement Forceps:

- Firm hold of the BiTine® ring during placement and removal.

### Original BiTine® Round Ring:

- Gentle tooth separation for getting proper contours.
- Eliminates forced wedging (cause for gingival trauma).

### BiTine® II Oval Ring:

- Longer loop for more visibility
- Longer tines for easy and firm placement in M.O.D. (Pict. 5)

### Three sizes and geometries for all situations:

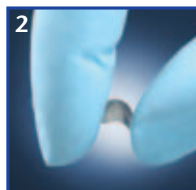
**Standard:** For most posterior situations

**Mini:** For narrow and shallow preparations with proximal boxes

**Plus:** For preparations with deep proximal boxes.



### Step by Step



### Separation:

The spring action of the BiTine Ring creates a gentle separation for tooth preparation.

BiTine Ring is removed; Finger roll the matrix to the approximate tooth curvature.

### Matrix Placement:

Place the matrix and insert an anatomical wedge (to close the gingival margin).

BiTine Ring is placed with the tines in the proximal plane for stabilization of the matrix.

### Tips for M.O.D.

The BiTine II Oval Ring is placed over the BiTine Round Ring

or

Two BiTine Rings are placed diverging like wings.

### ORDERING INFORMATION

	For EU	For US
<b>Palodent® Complete Kit</b> 200 Mixed Matrices, 6 rings	<b>659060Y</b>	<b>659060</b>
<b>Palodent® Refills</b>		
100 Standard Matrices Refill	<b>659010</b>	<b>659010</b>
50 Standard Matrices Refill	<b>659015</b>	<b>659015</b>
50 Mini Matrices Refill	<b>659020</b>	<b>659020</b>
50 Plus Matrices Refill	<b>659030</b>	<b>659030</b>
4 BiTine® Round Ring Refill	<b>659040</b>	<b>659040</b>
2 BiTine® II Oval Ring Refill	<b>659050</b>	<b>659050</b>
<b>Palodent® Forceps</b>	<b>624.99.060</b>	<b>659500</b>

**DENTSPLY Caulk**  
38 West Clarke Avenue  
Milford, DE 19963  
USA  
www.dentsply.com  
www.caulk.com

**DENTSPLY DeTREY GmbH**  
De-Trey-Str. 1  
78467 Konstanz  
Germany  
www.dentsply.de

For better dentistry

**DENTSPLY**