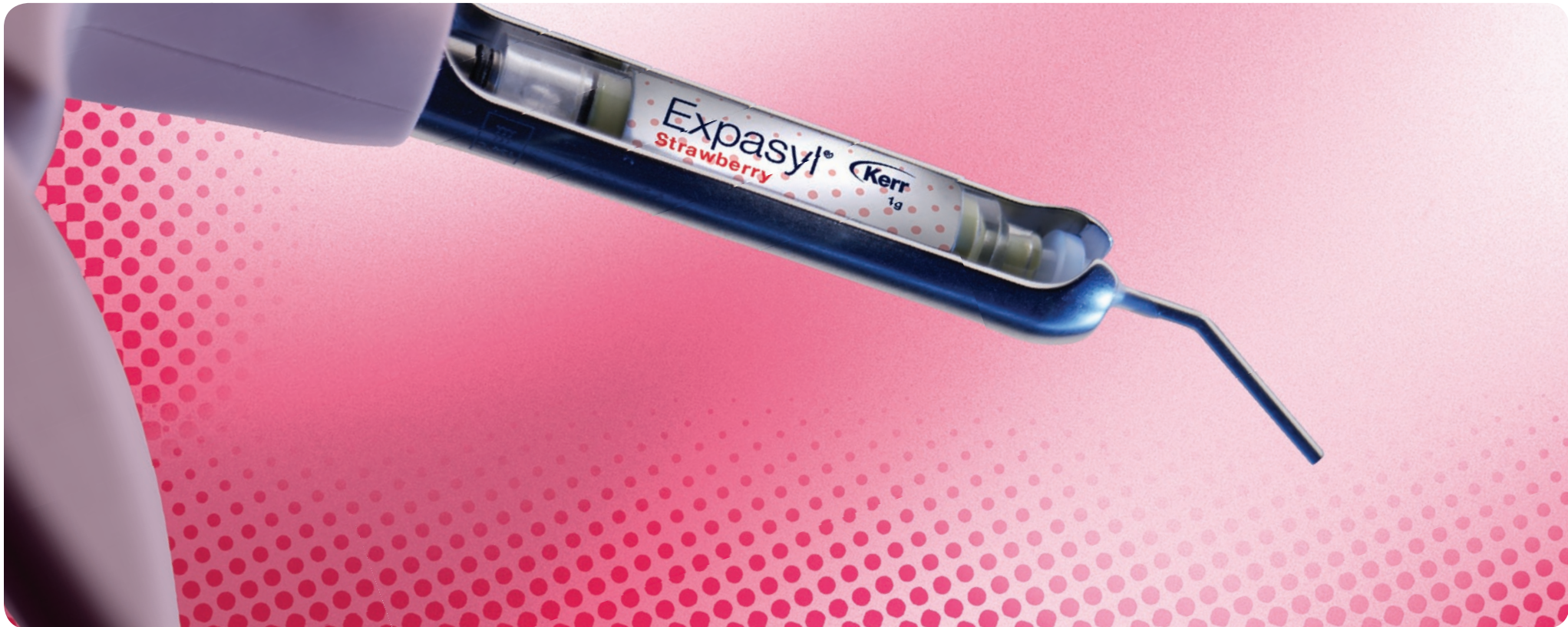


Your practice is *our* inspiration.™

Expasyl | Excellent hemostasis, atraumatic cord-free retraction



Expasyl Strawberry

Same great paste, now with a strawberry taste

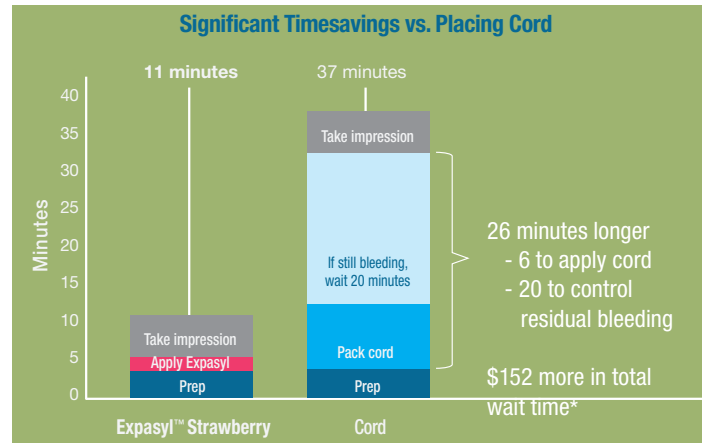


Original Expasyl™ and new strawberry flavor! Kerr continues to deliver a safe, cost-effective alternative to packing cord that's comfortable for your patients and offers significant timesavings. With excellent hemostasis and atraumatic gingival retraction, Expasyl makes tissue management easier. Application is simple. Just extrude the material directly into the sulcus, and rinse and dry after 2 minutes. No extra steps necessary.

*Inspired by:
This unique tissue management paste immediately opens the sulcus and stops bleeding for impressions, composite placement, and crown/veneer cementation. In my opinion, it has no equal.
- Dr. Bruce LeBlanc*

Research

Expasyl physically displaces tissue with little to no risk of rupturing the epithelial attachment so you can achieve excellent sulcular expansion. The presence of aluminum chloride controls bleeding and other fluids, leaving the sulcus dry and ready for impression taking. Use Expasyl for accurate impressions, seating of restorations, fitting rubber dams and class II, III and V restorations.



Features

Excellent retraction. Physically displaces tissue for superb marginal access.

Safe. Minimal pressure required. No danger of rupturing epithelial attachment.

Comfortable. Much less time and force needed compared with packing cord.

Hemostatic. Controls bleeding and crevicular seepage.



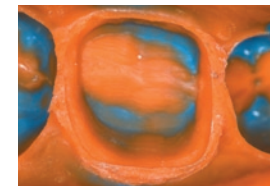
A safe, painless breakthrough for gingival retraction, Expasyl is injected into the sulcus, physically displacing the tissue. Easy application. Easy on the patient. Significant timesavings.



Left for 1-2 minutes and then rinsed, Expasyl's 15% aluminum chloride controls bleeding and crevicular seepage.



After rinsing, Expasyl leaves the sulcus open and dry. Excellent marginal exposure.



Combine Expasyl with the accuracy of Take 1® Advanced™ polyvinyl impression material and you have an easy-to-read impression with every detail rendered clearly.

Case courtesy of John Cranham, DDS

Ordering

- 34618 Expasyl Strawberry Premium Kit**
Contains: 10 Capsules Retraction Paste (1 g each), 1 Manual Applicator, 40 Curved Applicator Tips
- 32379 Expasyl Original Starter Kit (U.S.)**
- 32429 Expasyl Original Starter Kit (Canada)**
Contains: 6 Capsules Retraction Paste (1 g each), 1 Manual Applicator, 12 Applicator Tips
- 34619 Expasyl Strawberry Refill (20 Capsules)**
- 34620 Expasyl Strawberry Refill (10 Capsules)**
- 31172 Expasyl Original Refill (U.S.) (20 Capsules)**
- 32430 Expasyl Original Refill (Canada) (20 Capsules)**
- 32432 Expasyl Original Refill (Canada) (6 Capsules)**
- 33167 Manual Applicator**
- 31173 Applicator Tips (40 Tips)**
- 32264 Applicator Tips (100 Tips)**
- 34621 Curved Applicator Tips (100 Tips)**
- 34622 Curved Applicator Tips (40 Tips)**
- 4650 Pinnacle Protective Sleeve Refill (250 Sleeves)**
- 33353 Power Applicator**
Contains: 1 Power Applicator, 1 Additional Capsule Holder, 36 Single-Use Protective Plastic Sleeves, Directions for Use