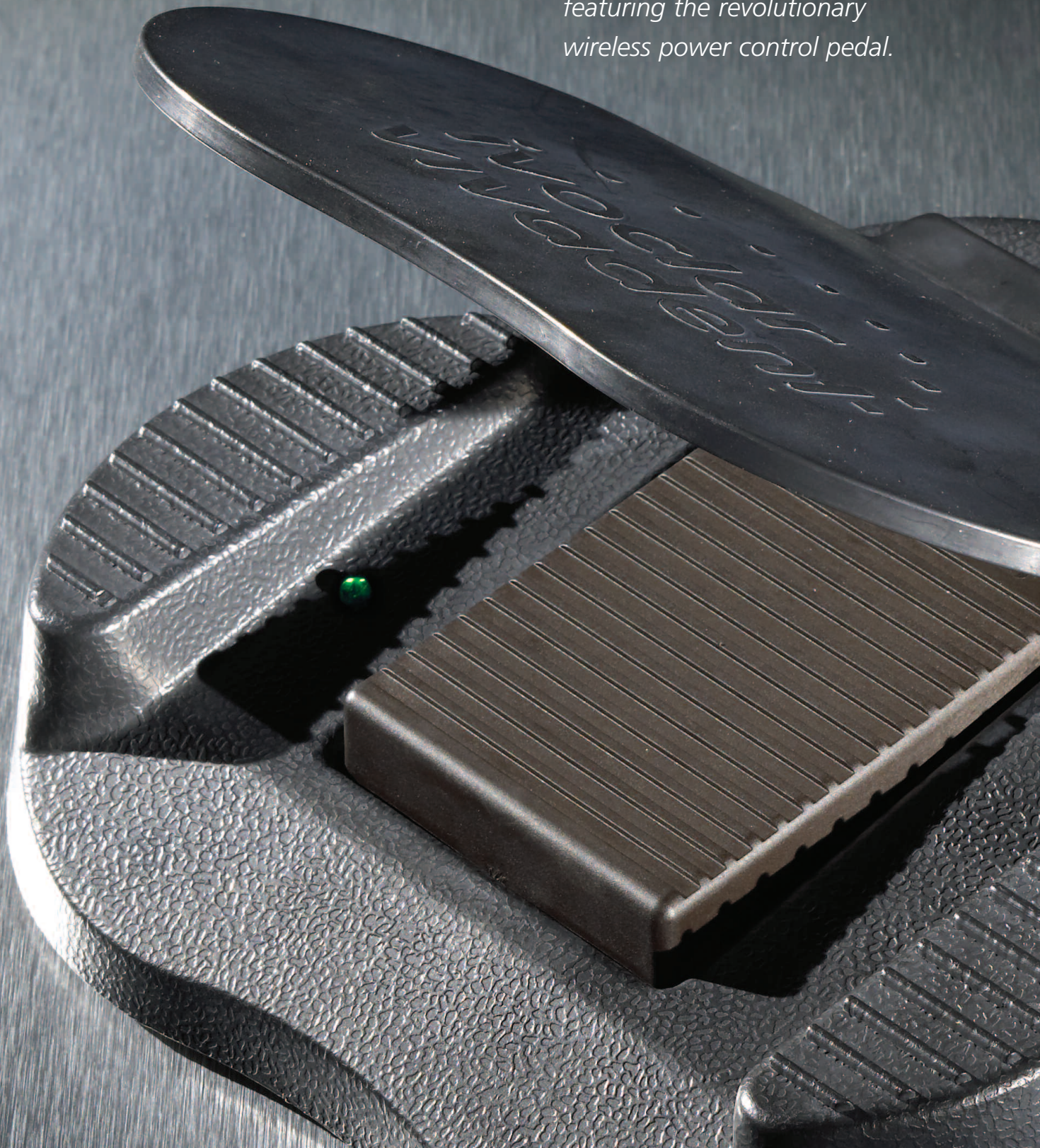


and accelerate your practice...

with the press of a pedal.

Experience the **Odyssey® 2.4G**
featuring the revolutionary
wireless power control pedal.



Specifications:

Weight: 5.5 lbs.

Dimensions: 6 1/4"(W) X 8 3/4"(L) X 5 1/2"(H)

Power Range:

- 100 mW to 5.0 Watts in 100 mW increments
- Aiming Beam (0.3 W)

Laser Classification:

- Laser Diode: Class 4 Laser Device

Wavelength:

- Laser: 810 nm \pm 20 nm
- Aiming Beam: 630 nm – 660 nm \pm 15 nm
- Beam Divergence: 9 degrees \pm 1 degree

Settings:

- Manual
- Capability for three customized and programmable settings
- 5 Levels of aiming beam intensity

Modes:

- Continuous Wave or Pulse
- Hertz Rate in Pulse Mode – fixed: 10 Hz
- Pulse Duration: fixed: .05 seconds
- Duty Cycle (pulse mode): 50%

Audible Notification: Yes

Visual Notification: Yes

Power Requirements:

Odyssey 2.4G Unit 110 - 120 VAC @ 60 Hertz
Odyssey 2.4G Wireless Pedal – 9V battery

Amperage: 3 Amps @ 110 - 115 VAC

Complies with:

IEC 60601-2-22	FCC Parts 15 & 18 (47 CFR)
IEC 60825-1	1C-RSS 210
21 CFR 1040.10 and 1040.11	EN-300 228
UL 2601-1	EN-301 489

Ordering Information

595126 Odyssey 2.4G Diode Soft Tissue Laser w/Accessory Kit

- (1) Odyssey 2.4G Laser Unit with 400 Micron Fiber Cartridge System
- (1) Fiber Stripper Tool
- (1) Fiber Cleaver
- (1) Protective Glasses Window Sides
- (1) Protective Glasses Solid Sides
- (1) Protective Glasses Plain
- (1) Package of (20) Hand Piece Tips - straight
- (2) Package of (20) Hand Piece Tips - 60 degree angle
- (2) Hand Piece (autoclavable)
- (1) Laser Key
- (1) Wireless Foot Pedal
- (1) Wireless Receiver
- (1) 9 Volt Lithium Battery
- (1) Power Cord
- (1) Odyssey 2.4G Hexdriver (under wireless pedal)
- (1) Odyssey 2.4G Training DVD
- (1) Odyssey 2.4G Owner's Manual
- (1) Odyssey 2.4G Clinical Guide
- (1) Laser Safety Sign
- (1) Warranty Information

Accessories:

- 579031 Fiber Stripper Tool
- 579032 Fiber Cleaver
- 598558 Protective Glasses - Solid Side Style
- 598559 Protective Glasses - Plain Side Style
- 598560 Protective Glasses - Window Side Style
- 579036 400 Micron Fiber Cartridge System
- 579039 Package of (20) Hand Piece Tips - straight
- 579116 Package of (20) Hand Piece Tips - 60 degree angle
- 579038 Hand Piece
- 594224 Laser Key
- 595477 Hand Piece Fiber Lock
- 595124 Wireless Receiver
- 579041 Power Cord
- 598462 Odyssey 2.4G Battery Door Screws (2)
- 598463 Odyssey 2.4G Hexdriver
- 580280 Laser Safety Sign
- 598621 9 Volt Lithium Battery

Learn more about Odyssey^{2.4G} at www.GetOdysseyLaser.com

UNITED STATES

Ivoclar Vivadent, Inc.
175 Pineview Drive
Amherst, New York 14228
716-691-0010
800-533-6825
Fax: 716-691-2285
www.ivoclarvivadent.us

CANADA

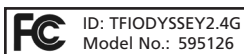
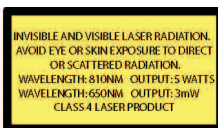
Ivoclar Vivadent, Inc.
2785 Skymark Ave., Unit 1
Mississauga, ON L4W 4Y3
905-238-5700
800-263-8182
Fax: 905-238-5711
www.ivoclarvivadent.ca

EUROPEAN AUTHORIZED REPRESENTATIVE

Ivoclar Vivadent, AG
Bendererstrasse 2, FL-9494,
Schaan, Liechtenstein
+423-235-3535

Odyssey^{2.4G}

DIODE SOFT TISSUE LASER



This device complies with part 15 of the FCC Rules. Operation is subject to the following two conditions:
(1) This device may not cause harmful interference, and (2) this device must accept any interference received, including interference that may cause undesired operation.

**100% CUSTOMER SATISFACTION
GUARANTEED!**

Call us toll free at 1-800-533-6825 in the U.S., www.ivoclarvivadent.us
©2008 Ivoclar Vivadent, Inc. Odyssey 2.4G is a registered trademark of Ivoclar Vivadent, Inc.
595136 Rev. 3, 2/2008

**ivoclar
vivadent**
passion vision innovation



Your Key to Better Dentistry.

Turn the key on the Odyssey 2.4G laser



Design

The true key behind the Odyssey 2.4G Diode Laser: Passion for better dentistry.

Laser Technology

The Odyssey 2.4G offers you easy access to the most sophisticated, precise and minimally invasive technology in dentistry.

Wireless Technology

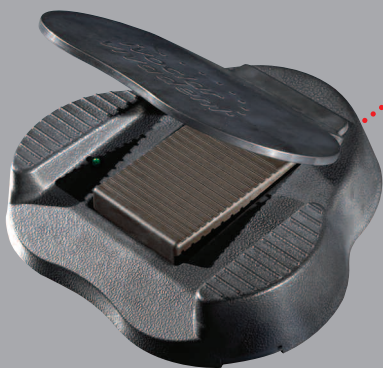
Breaking new ground in dentistry featuring a wireless power control for ease of use and portability.

Retractable Fiber

The only laser in dentistry with a unique retractable fiber-management system for great ergonomics and easy delivery.

Programmability

A user defined simplified control panel allows the clinician the ability to begin lasing with a simple push of a button.



Patient Comfort

Patients perceive the Odyssey 2.4G as a precise and gentle technology. They love to go to a 'laser dental professional'.

Productivity

The Odyssey 2.4G empowers a more efficient technology to perform existing procedures and expands the services offered in your practice.

Portability

The Odyssey 2.4G weighs only 5.5 pounds and fits on a sheet of paper. Its compact size and light weight make it easy to transport from operator to operator.

Performance

The Odyssey 2.4G diode laser's high affinity for soft tissue makes it an invaluable tool for esthetic sculpting, accessibility, isolation and the healing of soft tissue.

Safety

The Odyssey 2.4G features the highest level of safety, high quality construction, and worldwide safety standard compliance.

Reliability

Supported by over 50 years of Ivoclar Vivadent's dental expertise.

and decide for yourself...

Integrate the Odyssey 2.4G diode laser into your practice to offer the highest quality care and most advanced treatment options to your patients. The Odyssey 2.4G diode laser empowers you to perform your current procedures in a more effective and

less traumatic manner. Expand your expertise into cutting-edge technology, and upgrade your methods to incorporate a comprehensive program of options for your patients and team. No other new technology offers the range of benefits,

from conservative to advanced treatment options with such simplicity, in concert with the continuing upgrade of science, education and the art of dentistry.

Troughing for Impressions



Tissue covering preparation's margin, bleeding



Gentle troughing with the Odyssey 2.4G

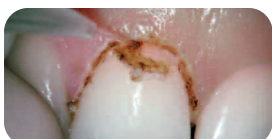


Clear margin visualization for accurate impression

Clinical Crown Lengthening



Gingival asymmetry, adequate biological width



Gentle and precise ablation of marginal tissue



Gingival proportion achieved with minimal charring

Hemostasis



Bleeding after cavity preparation



Non-contact treatment with the Odyssey 2.4G



Create ideal isolation and hemostasis

Laser Soft Tissue Debridement



Diseased soft tissue lining of the periodontal pocket



Removal of epithelial lining



Bacteria reduction with low laser energy

Orthodontic Tissue Control



Mandibular canine erupted but partially covered by tissue



Laser used to remove excess tissue to integrate canine in the treatment



Bracket bonded in the same appointment

Frenum Release



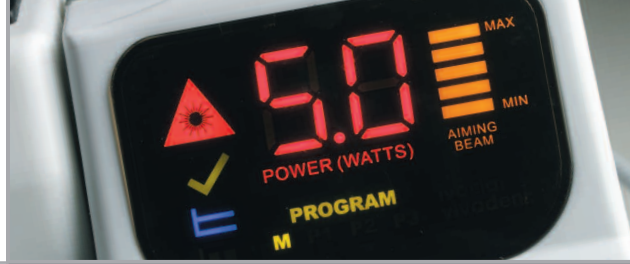
Excessive frenum attachment



Frenum released with minor laser incision minimal tissue trauma, no bleeding



Healed and healthy frenum attachment



Ask the Expert...

What does a diode laser do?

A soft tissue laser uses the power of light to vaporize oral soft tissues with UNMATCHED PRECISION.

How do I use it?

I use the Odyssey 2.4G diode laser to prepare gingival tissues in three dimensions for fixed PROSTHODONTIC impressions and to control tissue adjacent to restorative preparations.

How does it work?

The Odyssey 2.4G diode laser vaporizes and modifies soft tissue without bleeding and often only with topical anesthetic.

What should I tell my patients?

Lasers are the most precise, least traumatic instrument that will help the patient heal with less post-operative pain.

How do I pay for it?

When the Odyssey 2.4G diode laser is used, it saves valuable chair time. It makes current procedures more effective and procedures beyond conventional training simplified because of the complete hemostasis and lack of suturing required. Adding the laser to current soft tissue procedures and just one frenectomy or fibroma removal each month will generate more income than the payment for the laser.

What are the advantages of having a soft tissue diode laser?

Today's esthetic bonding techniques require total control over the operative sites; the diode laser ensures the ability to achieve that. No other instrument ever available to the dentist has had the capability of such precise tissue sculpting. The diode laser is the least traumatic of all competing and conventional instruments. The Odyssey 2.4G diode laser is affordable and small enough for every practice, simple to operate and easily learned and incorporated into your practice.

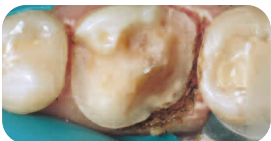
How is it different from other lasers?

When used in contact, the diode laser energy only penetrates approximately 200 microns, making it safe, conservative and effective. Surface tissues are vaporized in a controlled manner, and the underlying connective tissue is coagulated and the resulting laser wound is self-sealing, requiring no suturing.

CAD/CAM Dentistry



Fractured restoration with tissue overgrowth



Margin exposure with Odyssey 2.4G troughing



Restoration completed with Ivoclar Vivadent's CAD CAM restoration

Implant Access



Tissue covering implant



Troughing to uncover implant



Exposed implant, no bleeding

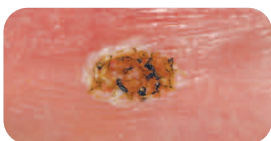
Tissue Removal/Biopsies



Fibroma to be removed and biopsied



Grasp tissue and remove lesion with Odyssey 2.4G



No bleeding, sealed lymphatics, and no sutures

Apthous Ulcer



Accute and painful aphthous ulcer



Non-contact treatment with Odyssey 2.4G



Lesion attenuated with no patient discomfort

Clinical Photography and expertise courtesy of:

Dr. Joel Benk, Jr.
Dr. John Graeber
Teri Gutierrez, RDH

Dr. Michael Koczarski
Dr. Ed Lowe
Dr. David Sarver

Dr. Rhys Spoor
Dr. Alex Touchstone
Dr. Glenn van As

— Dr. John Graeber