

S P E C I F I C A T I O N S

A/T 2000XR



Process Time: Archival, 5 1/2 Minutes. "Quick-look" Endo periapical films, 2 1/2 minutes.
Chemistry Replenishment: At initial Power On, 4 1/4 oz. in 90 seconds. Every 13 3/4" linear film, 1 2/3 oz. in 35 seconds.
Electrical: 115V, 60Hz, 8A. Use 3 prong grounded outlet. Dedicated 15 amp line recommended.
Water Connection: 3/4" male garden hose.
Water Flow: 1/2 gallon/minute when processing film. Do not use water softeners.
Water Pressure: 80 psi max. / 30 psi min. Manual shut-off required near processor.
Water Temperature: Mixing valve not required if water temperature is between 55°F (13°C) to 80°F (27°C).
Dimensions: 18"x15"x25" with leveling base. With Daylight Loader, 18"x16 1/4"x39"; (HxWxD)
Weight: 90 lbs. with water and chemistry; 75 lbs. empty.
Warranty: Processor, 12 months. Electronics Module, 24 months.

Peri-Pro III / Peri-Pro



Processing Capacity: Accepts 8 #2 films or Carriers loaded with #0, #1, #3 or #4 films.
Film Sizes: #0 (Pedo), #1 (Adult Anterior), #2 (Adult), #3 (Bitewing), #4 (Occlusal).
Chemistry: Use Peri-Pro Chemistry only.
Tank Capacity: 1 qt. each, developer and fixer; 1 1/4 qts. wash.
Plumbing: Not required.
Electrical: 115V, 5A.
Warranty: 12 months.

	Peri-Pro III	Peri-Pro
Dry-to-Dry Process Time:	5 minutes	7 1/2 minutes
Dimensions (HxWxD):	8 1/2" x 25" x 10"	8 1/2" x 25" x 9 3/4"
With Daylight Loader:	15 3/4" x 25" x 10"	15 3/4" x 25" x 9 3/4"
Weight:	22 lbs.	20 lbs.
Chemistry Temperature:	75°F, Automatic	Room temperature

Product Reliability and Innovation since 1962.



Our 200,000 sq. ft. manufacturing facility in Melville, NY.



Headquarters
 1295 Walt Whitman Road, Melville, NY 11747-3062
 Phone: 516-433-7676 □ Fax: 516-433-7684 □ Toll Free in the U.S. and Canada: 800-AIR-TECH

Western Facility
 291 Bonnie Lane, Suite 101, Corona, CA 92880
 Phone: 951-898-8555 □ Fax: 951-898-7646 □ Toll Free in the U.S. and Canada: 800-822-2899

www.airtechniques.com

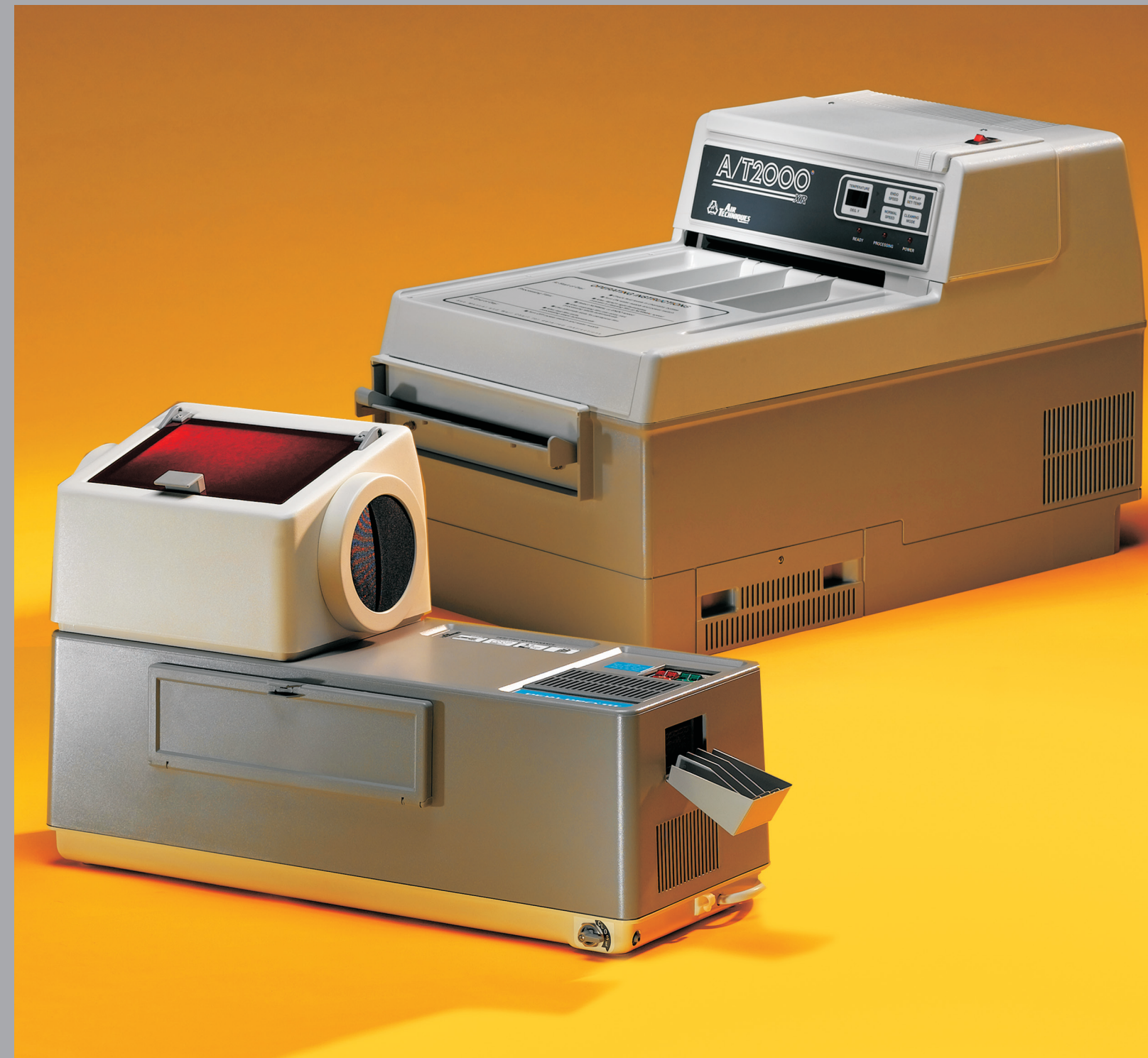
PN 9922-346 Rev A

A/T 2000XR®

Peri-Pro III®

Peri-Pro®

Efficient, Economical and Innovative.
 The Best in Film Processor Technology.

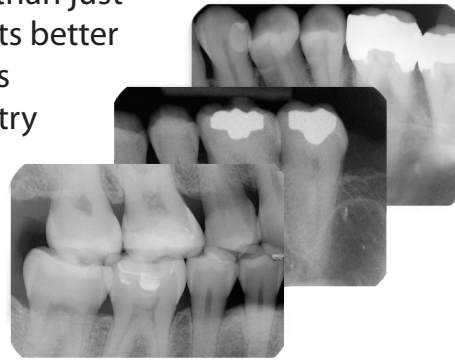


Develop Your Practice

Excellence in film radiography means more effective film imaging. More than just a diagnostic tool, film radiography is still a popular medium to help patients better understand their case and treatment options. Air Techniques manufactures exceptional film processors, allowing you to achieve more accurate chemistry formulations, temperatures and replenishment rates.

Air Techniques has two distinct film processors to meet your office needs. No matter which model you choose, you will be helping your patients to better understand their case and treatment options.

Air Techniques products are as economical as they are efficient. From one source, we fulfill your processor, chemistry and cleaning products needs.



A/T 2000XR®



The A/T 2000XR Film Processor provides high quality radiographs in any size. If your practice works in larger size film, A/T 2000XR is the right fit. A/T 2000XR is automatically controlled and highly efficient to keep your practice running smoothly.

- ❑ Processes every dental film size: Panoramic, Cephalometric, TMJ, Occlusal and all Intraorals.
- ❑ Automatically controlled processing time, chemistry temperature and replenishment rates.
- ❑ Each film is fully developed and fixed.
- ❑ Electricity use, water consumption and system wear are reduced.
- ❑ Compliance with local codes.
- ❑ Built-in water recirculation system.
- ❑ Advanced automation saves time.
- ❑ Archival radiographs are available in just over 5 minutes.
- ❑ Endo Speed setting takes only 2 ½ minutes.

Peri-Pro III®/Peri-Pro®

Peri-Pro is your solution for developing intraoral film. Film is gently and quickly guided through each cycle by stainless steel arms and gravity to ensure your radiographs are of the highest quality.

- ❑ Process all intraoral film sizes 0, 1, 2, 3 and 4.
- ❑ Peri-Pro III has an electronically controlled heating system to maintain an optimum 75° F chemistry temperature.
- ❑ Peri-Pro operates at room temperature, and films are processed in 7 ½ minutes. 5 minutes for archival film.
- ❑ Film surfaces are never touched.
- ❑ Up to 8 films may be loaded.
- ❑ Speed combined with space-efficiency.



Chemistry



Every batch of Air Techniques chemistry receives continual quality inspection. Our developer has superior anti-oxidation properties for longer life. Balanced hardener levels protect emulsion, guarding against scratches and roller marks. Our fixer easily washes off the film surface, extending the life of radiographs.

- ❑ A/T 2000 Developer and Fixer
- ❑ Starter
- ❑ Recovery Containers

Accessories



Film Duplicator

For film duplication outside of a darkroom.



Panoramic Daylight Loader

Allows processor to be installed outside the darkroom.



Quickloader Covered Feed Chute

Eliminates waiting until the last film is inside the processor before illuminating or exiting the darkroom.



Panoramic Flat Bottom Daylight Loader

Flat bottom enables you to save space.

Cleaning Products



Spray 2000 Plus

Protects films from roller deposits and prolongs the life of roller transports.



Peri-Pro Transport Cleaning Kit

Includes all items needed to clean a Peri-Pro Transport: 1 cleaning tub, 1 brush and 1 twin pack of Formula 2000 Plus.

