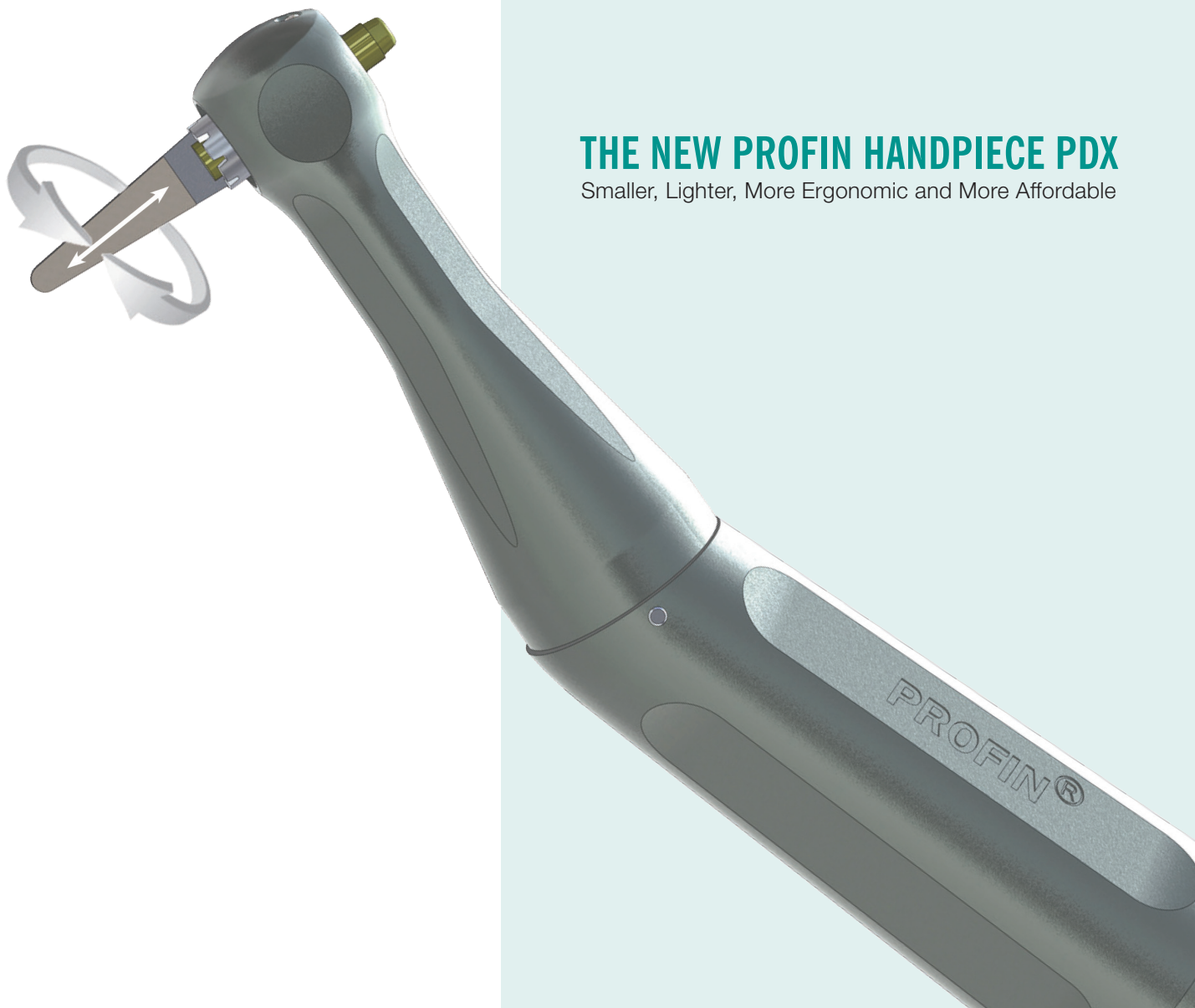
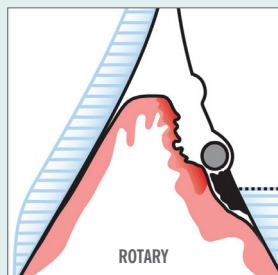


# PROFIN<sup>®</sup>

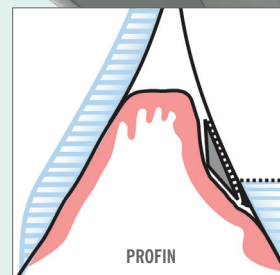


## THE NEW PROFIN HANDPIECE PDX

Smaller, Lighter, More Ergonomic and More Affordable



ACCESS  
INTERPROXIMAL  
SPACES



Ref: Per Axelsson, DDS, Odont Dr Sweden

**The unique Profin® Reciprocating Handpiece is the instrument of choice for shaping, contouring and polishing natural dentition and cosmetic restorations with easy access and flexibility.**

Profin is the perfect instrument to remove bulk, interproximal and subgingival residual bonding materials in all parts of the dental arch.

The Lamineer® diamond tips move in a reciprocating axial direction (1.2mm stroke) in the Profin handpiece, and can be set to rotate freely and follow tooth contours naturally, or they can be locked radially for direct and specific modifications. The thin flat tips come in a variety of shapes, sizes and grits allowing optimal control and access. Plastic and wooden tips are available for polishing and burnishing.

---

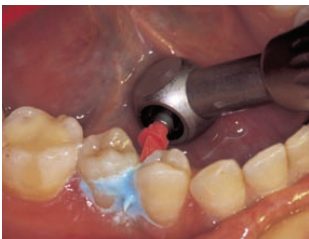
## PROFIN APPLICATIONS INCLUDE:

---



### Cosmetic Dentistry

Touch-ups can be performed safely, allowing you to create anatomical shapes for your patient's esthetics and comfort.



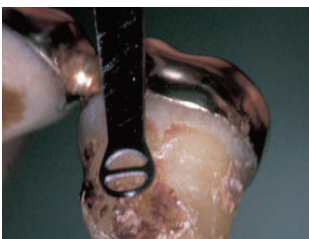
### Hygiene

Profin's gentle mechanical function and reach make this an instrument of choice for dental prophylaxis. Plastic tips are recommended for scrubbing and polishing. V-shaped wings collapse to fit fine interdental spaces.



### Orthodontics

Profin's reciprocating motion allows for easy interproximal reduction with greater control and efficiency. The tungsten Lamineer tip quickly cleans up residual ortho cement without scratching healthy enamel.



### Periodontics

An outstanding concept for scaling, root-planing and debridement, the Per-io-tor instruments are specially designed to optimize cleaning and planing of the rough root cementum and prevent further removal once the surface is clean and smooth.



### CAD-CAM Technology

Whether you are prepping an in-lay or on-lay, refining vertical proximal walls & margins or finishing interproximal contours, you'll find Profin's precision an indispensable asset to your CAD-CAM restorations.