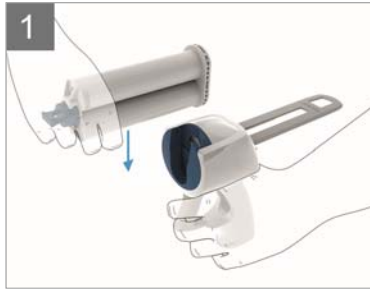
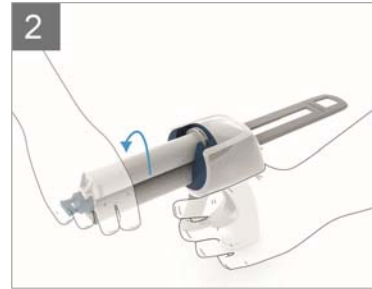


## USER MANUAL

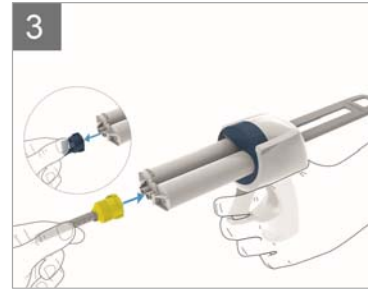
### Insertion



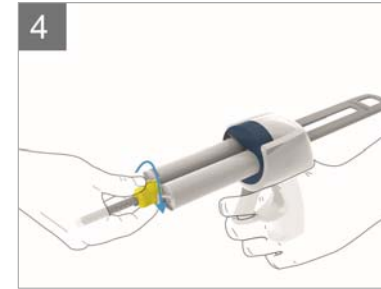
Insert the cartridge into the rotation ring – slim side downward (not relevant for 1:1 cartridges).



Lock the cartridge by turning it by 90° counter-clockwise.



Remove cap and attach mixing tip. Note the corresponding notches.

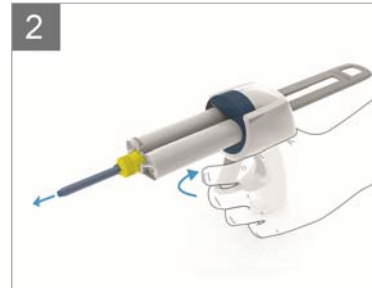


Turn the mixing tip by 90° clockwise to lock it.

### Application



Push the plunger forward until the stop.



Pull the trigger until the material is coming out.



Examples of applications

### Cleaning



To close the dispenser, rotate the ring by 90° anti-clockwise until it locks in place.



Push up the lever and eject the plunger



Components