

Herculite® *Ultra* Technique Guide

Anterior



- 1** Prepare tooth. Place rubber dam and insert clear matrix.



- 2** Apply 1st coat OptiBond® All-In-One, scrub 20 seconds.



- 3** Apply 2nd coat OptiBond® All-In-One, scrub 20 seconds. Air dry at least 5 seconds. Light cure 10 seconds.



- 4** Add composite in increments of 2 mm or less. Light cure each increment*



- 5** Finish and polish the restoration with OptiDisc® polishing system.



- 6** Final result after treatment.

Please refer to the Instructions For Use for complete directions.

*Recommended Cure Times: Demi, 5 seconds; L.E.Demetron II, 5 seconds; L.E.Demetron I, 10 seconds; all other lights, see manufacturer recommendation.

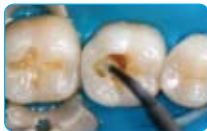


79790 Rev 0

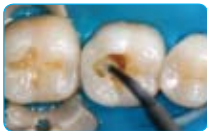
Herculite® *Ultra* Technique Guide



1 Prepare tooth using carbide or diamond bur.



2 Apply 1st coat OptiBond® All-In-One, scrub 20 seconds.



3 Apply 2nd coat OptiBond® All-In-One, scrub 20 seconds. Air dry at least 5 seconds. Light cure 10 seconds.



4 Place composite in 2 mm increments or less. Light cure each increment.*



5 Finish restoration with egg-shaped bur. Complete final anatomy with needle-shaped bur.



6 Use Occlubrush® to polish occlusal surfaces.



7 Final result after treatment.

Posterior

Please refer to the Instructions For Use for complete directions.

*Recommended Cure Times: Demi, 5 seconds; L.E. Demetron II, 5 seconds; L.E. Demetron I, 10 seconds; all other lights, see manufacturer recommendation.

Kerr