



## QUICKMAT DELUXE

### THE COMPLETE SECTIONAL MATRIX SYSTEM of POLYDENTIA SA

#### Overview

**Quickmat Deluxe** is a **Sectional Matrix System** that allows to create perfect, extremely precise and anatomically correct contact points in class II restorations. The system is characterized by its user-friendliness and contains the following components:

- **Quick Rings:** in stainless steel, very handy especially for reconstructions of MOD-cavities ;
- **„Re-Force“ insert for Quick Rings:** Placed upon the ring, it allows to increase the separation force exerted on the teeth when the clinical situation asks for it;
- **Delta and Cylindrical Silicone Tubes:** Particularly suitable in case of very extensive cavities. Applied to both ends of the Quick Ring, they perfectly fit to the convexity of the teeth thanks to their innovative shapes, facilitating adhesion and adaptation of the matrix;
- **Thin (0.04 mm) Contoured Sectional Matrices:** Anatomically shaped and easy to burnish;
- **Microthin (0.025 mm) Contoured Sectional Matrices:** In case of serrated interdental spaces, this microthin version allows to obtain very tight contact points with an ideal morphology;
- **Assorted maple wood wedges:** Available in different sizes, for optimal separation of the teeth.

All components can be reordered separately, according to the own clinical necessities and requests.

#### CLINICAL APPLICATION: QUICKMAT DELUXE – AN EXAMPLE OF MOD-FILLING

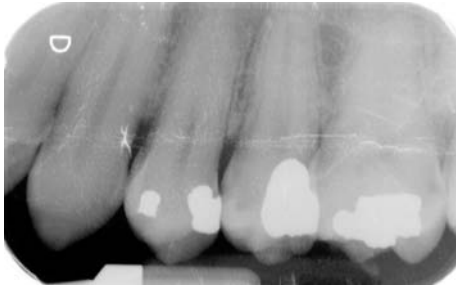
By courtesy of Dr. med. dent. Dr. J. A. Fernández Ruiz – Ibiza/Spain

*Image 1 :*



Clinical, pre-operative view. Amalgam fillings have to be replaced.

**Image 2 :**



Picture „X-Ray“ before treatment.

**Image 3 :**



Rubber dam placement for proper isolation and removal of amalgam.

**Image 4 :**



Wood wedges, sectional matrices (0.04 mm / .0015" thin) and two Quick rings with silicone tubes are placed on both sides of the tooth.

**Image 5 :**



Etching the cavity.

**Image 6 :**



Tooth coating with bonding agent.

**Image 7 :**



Composite application to the contact area of the preparation.

**Image 8 :**



Composite is light-cured.

**Image 9 :**



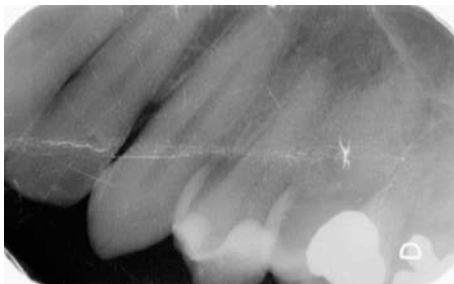
Occlusal view after polymerization.

**Image 10 :**



Post-operative view of the restoration.

**Image 11 :**



Final „X-Ray“ picture.

### **Conclusion – What patients tell us**

In the recall visits we observed the absence of food accumulation in the interdental spaces, reflecting the success of the treatment and the reached perfect contact point. Our patients rated comfort and satisfaction for this treatment between very good and excellent.