

# BulkEZ™

Bulk Fill Composite

***Finally, a truly predictable  
one layer composite!***

***"A real game changer in the bulk fill  
composite arena, due to minimal  
microleakage and infinite cure."***

***- Dr. Michael Miyasaki, DDS***



**No more worries about depth,  
just fill it up and let it cure by itself.**

**Bulk EZ™** is a dual cure dental restorative composite designed for direct restorations. When allowed to self-cure, **Bulk EZ™** features excellent physical properties for posterior restorations and offers an unlimited depth of cure. Light curing is only needed to harden the air inhibited top layer after self-curing. With no layering required, time savings over light cured bulk composites are over 60%. Unlike other dual cure composites, **Bulk EZ™** is compatible with all bonding agents. The directed and “right” shrinkage of **Bulk EZ™** offers the best interproximal margins. No voids or gaps are formed at the bottom of the restoration as a result of curing, limiting the risk for post-operative sensitivity or recurrent decay, which is often seen at the interproximal gingival margin.

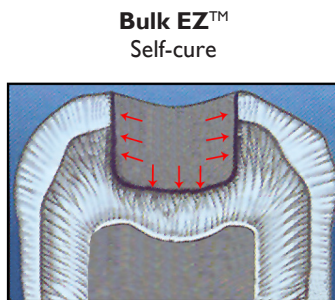
## FEATURES AND BENEFITS:

- Unlimited depth of cure, guarantees complete curing in the deepest cavities.
- Best interproximal margins and lowest degree of microleakage compared to the competition.
- One step bulk placement - no layering required - unlimited depth of cure!
- Compatible with all methacrylate-based bonding agents.
- No sonic vibrator needed for placement.
- High radiopacity.
- Fast setting.

*“A completely versatile bulk fill composite.  
Cap it or not, the decision is yours.”*

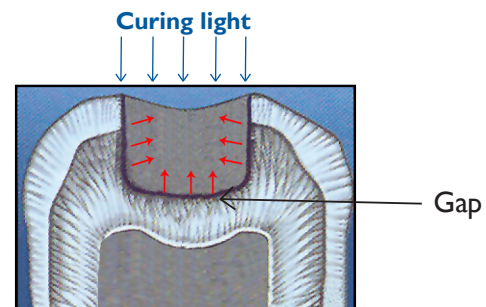
*- Dr. Troy Schmedding  
Assistant Professor  
UOP School of Dentistry*

## THE RIGHT SHRINKAGE



**Bulk EZ™** self-cure:  
exhibits shrinkage toward  
the bottom and side walls.

Illustration of  
self-cure and  
light-cure  
shrinkage behavior.



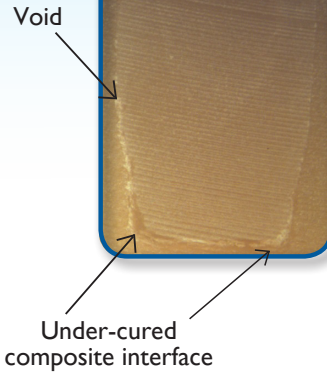
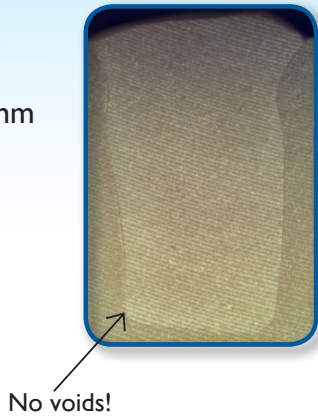
Light cure composites:  
exhibits shrinkage toward  
the top of the restoration.

# BULK EZ™ - NO GAPS OR VOIDS

## WHY USE ANYTHING ELSE TO RISK COMPROMISING YOUR RESTORATIONS?

Bulk fill composites were filled and cured in composite cavities.

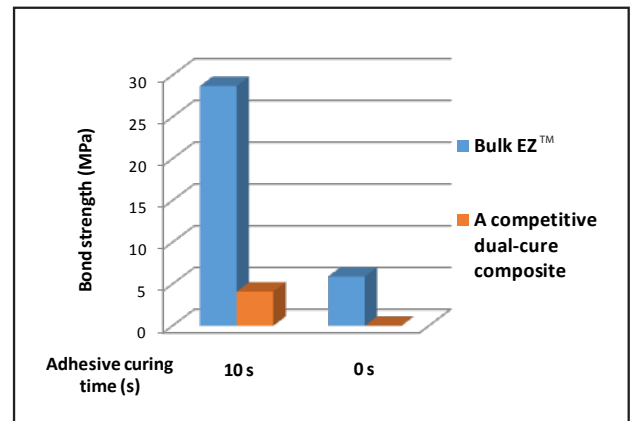
(a) **Bulk EZ™** at 7 mm depth, with bottoms completely intact.



(b) A competitive bulk fill composite at 7 mm depth, with visible voids and gaps at the bottom.



With a radiopacity of 320%, **Bulk EZ™** can easily be seen on a radiograph.



Bond strengths of **Bulk EZ™** and a competitive dual-cure composite on dentin, using a popular total-etch bonding agent. **Bulk EZ™** exhibits fully compatible bonding results, while the competition exhibits only marginal bonding.

Test Method	Bulk EZ™
Film Thickness	14 microns
Work/Set time (22 °C/72 °F)	90/120 s
Work/Set time (37 °C/99 °F)	40/65 s
Volume Shrinkage	3.80%
Flexural Strength	138 MPa
Compressive Strength	261 MPa
Diametral Strength	50 MPa
Water Sorption	12 µg/mm
Water Solubility	0.0 µg/mm <sup>3</sup>
Radiopacity	320% AI

The game changing chemistry of **Bulk EZ™** eliminates the limitations of all early generation bulk fill composites.

**PROBLEM SOLVED!**

**Infinite cure depth**  
without light or vibration.



Directed shrinkage  
**eliminates stress**  
that causes voids and cracks.

**PROBLEM SOLVED!**

**Interproximal leakage**  
is virtually **eliminated**.

**PROBLEM SOLVED!**



**Danville**

# BEST INTERPROXIMAL

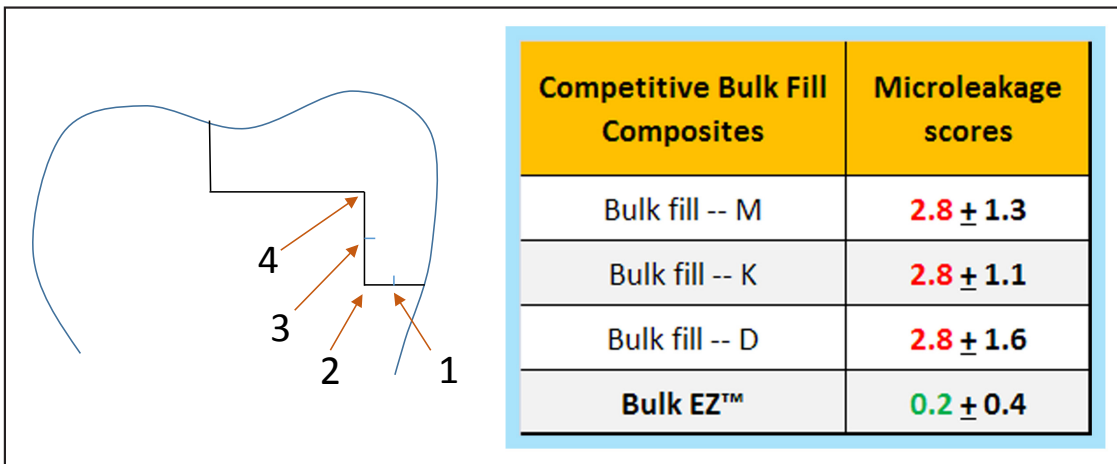
Microleakage results of Class II restorations after 5000 thermal cycles between 5/50 °C and dye penetration.

(a) **Bulk EZ™**: Best interproximal margins, no microleakage along the interproximal margins.



(b) A competitive light curing bulk fill composite: gaps and microleakage along the interproximal margins.

## MICROLEAKAGE SCORES



Microleakage results of Class II restorations after 5000 thermal cycles between 5/50 °C and dye penetration. High numbers indicate greater microleakage.

*“ Danville has done it again...Solved the mystery of bulk fill and made it more predictable and reliable and ultimately more profitable.”*

- Dr. Kami Kohani  
Associate Professor  
UCLA  
School of Dentistry

## Bulk EZ™ Ordering information:

### **94778 Bulk EZ™ Trial Kit**

Bulk EZ™ A1 syringe (x1), Bulk EZ™ A2 syringe (x1), Bulk EZ™ A3 syringe (x1), Bulk EZ™ 17 gauge mixing tips (x10), Bulk EZ™ 19 gauge mixing tips (x10), ZNano™ A2 unit dose (x5).

### **94775 Bulk EZ™ Refill A1**

Bulk EZ™ A1 syringe (x2), Bulk EZ™ 17 gauge mixing tips (x3), Bulk EZ™ 19 gauge mixing tips (x3).

### **94776 Bulk EZ™ Refill A2**

Bulk EZ™ A2 syringe (x2), Bulk EZ™ 17 gauge mixing tips (x3), Bulk EZ™ 19 gauge mixing tips (x3).

### **94777 Bulk EZ™ Refill A3**

Bulk EZ™ A3 syringe (x2), Bulk EZ™ 17 gauge mixing tips (x3), Bulk EZ™ 19 gauge mixing tips (x3).

## Bulk EZ™ Accessory Products

### **ZNano™**



Universal Nanocomposite

If you're looking for a great anterior composite to use after **Bulk EZ™**, **ZNano™** is it! With its superior polishability and physical properties, **ZNano™** makes for the perfect "cap" after using **Bulk EZ™**.



Contact Matrix Ring

Danville's new **Mega V™** Matrix system is the perfect solution for your Class II restorations. The **Mega V™** Ring, with its unique inclined hoop and superior strength allows you to perform Class II restorations both quickly and efficiently.

### **Prelude One™**



Universal Adhesive

**Prelude One™** is a light curable single component adhesive used for bonding to all dental surfaces. Its extremely high bond strengths and compatibility with dual cure composites (without requiring an additional activator) make for the perfect bonding agent.

