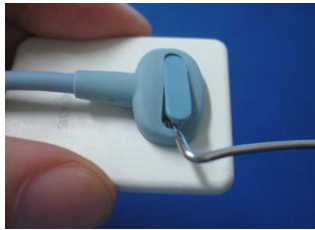


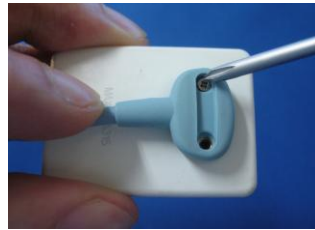
CDR Elite Cable Replacement

Please clean and dry your hands before performing this procedure. Do not wear gloves since the powder inside them could be deposited on Sensor contacts while replacing the cable. Make sure the Sensor is placed securely on a clean, moisture-free surface.

Step 1



Using a dental instrument, carefully lift and remove the tab cover from the back of the Sensor cable. Dispose of the tab cover as a new one will be used when the new cable is attached.



Using the screwdriver provided, loosen and remove the 2 screws that secure the cable to the Sensor. Dispose of the screws as new ones are supplied. Remove the cable from the Sensor.

Step 3



Remove cable from kit. Align the cable to the Sensor so the Sensor keying feature connects to the corresponding key in the cable. When properly aligned, the cable fits the back of the Sensor evenly and the metal area is completely covered.

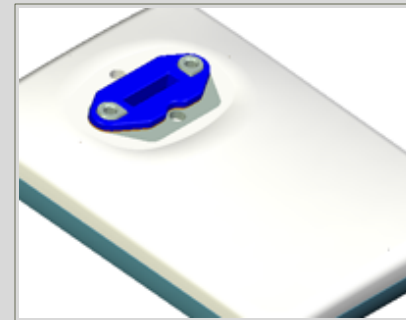


Using the screwdriver, tighten the first screw just until you feel some resistance. Repeat this action for the second screw. Fully tighten both screws and make sure that they are securely tightened.



Place a new tab cover over the screw slot and slide it across the slot while applying downward pressure, especially at the middle of the tab. When the tab completely covers the slot, snap it into place.

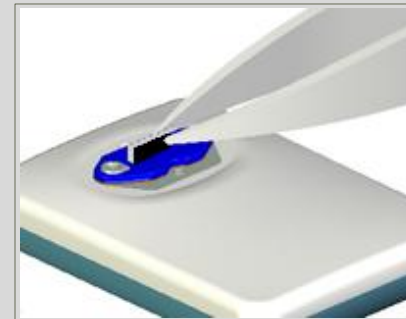
Step 2



NOTE: If a frame is attached already to the Sensor (as shown), skip ahead and start with the next picture below.

If the Sensor **does not** have a blue frame, remove one from the CDR Elite spare parts kit and place it into position. When positioned correctly, the flat side of the frame will be facing up.

NOTE: CDR Elite parts are blue.



Using a tweezers, take a new (blue) strip from the CDR Elite spare parts kit and insert the strip into its slot in the Sensor. *Strip shown darker in this image for clarity.*



After inserting the strip, apply a small amount of finger pressure to ensure the elastomer is seated squarely in the slot.

IMPORTANT! The elastomeric strip must be seated squarely in the slot for the Sensor to function



Like other electronic devices, your CDR Elite Sensor is susceptible to electrostatic discharge (ESD), particularly when the device is used in or around carpeted areas or low humidity environments.

During cable replacement, when Sensor contacts are exposed, it is especially important to protect the device from potential ESD damage.

Touching a metal surface prior to replacing the cable will reduce the risk of damaging Sensor components by accidental static discharge. The use of anti-static floor mats or floor treatments (for example Staticide 2005/2002) will also help eliminate static build-up in your office. Make sure the Sensor is placed securely on a clean, moisture-free surface.

List of Materials

| | |
|--|-----|
| B1209155, B1209156, or B1209157 | |
| Schick replaceable cable | (1) |
| B1207041 Screwdriver | (1) |
| B1207151 Screw tab cover | (2) |
| B1207254 CDR Elite elastomeric strip | (2) |
| B1207361 CDR Elite elastomer frame | (2) |
| A2402800 Phillips flat-head screw (0-80) | (4) |

Part Number B1051081 Rev.-
Copyright © 2012 by Schick Technologies, Inc.
All Rights Reserved (Publication date 2/27/2012)

