



# SANI Vac™

Evacuation System Cleaner



## SANI Vac™ Cleaner

A powerful enzymatic cleaner for continuous, high-performance suction

The unique low-foaming formula of the SANI Vac Cleaner includes multiple proteolytic enzymes that efficiently remove a wider range of dental debris than surfactants alone. These enzymes specifically break down proteinaceous materials (saliva, mucous and blood) that build up and block your suction lines. Clogged suction lines can potentially lead to cross-infection, endangering your patients. Routine use of SANI Vac Cleaner will help prevent downtime by ensuring your suction lines and solids traps remain unclogged for optimal suction.

### BY THE NUMBERS

**3** LINES treated per ounce of concentrate

**384** APPLICATIONS per bottle

### Ordering Information

Description	Quantity	Ref.#
SANI Vac™ Evacuation System Cleaner	1-gallon bottle	JVAC

## FEATURES & BENEFITS

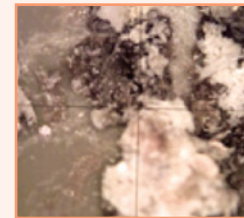
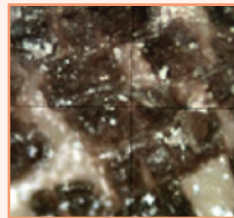
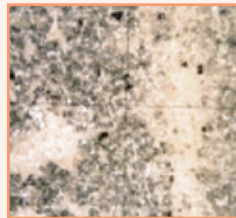
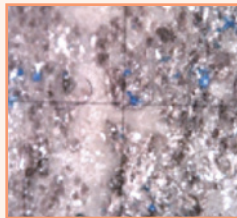
- **SUPERIOR CLEANING** – Highly effective, low-foaming cleaning action without the overflow. According to a recent study, SaniVac outperformed leading HVE cleaners on the market (see pictures below).<sup>1</sup>
- **VERSATILE & Hg5 COMPATIBLE** – Ideal for use in both wet and dry vacuum systems; pH-neutral (7.8) and non-oxidizing formula meets the EPA Best Management Practices for Dental Amalgam Waste.<sup>2</sup>
- **ECONOMICAL** – Highly concentrated formula offers a low cost-per-use when diluted; regular use may help avoid downtime and costly line repairs.
- **ENVIRONMENTALLY FRIENDLY** – Phosphate-free, fresh-scent biodegradable formula neutralizes odors in your evacuation lines and lets you clean responsibly.

## TECHNICAL INFORMATION

- Form: Liquid concentrate
- Color: Pale yellow
- Odor: Fresh scent
- pH of Diluted Product: Neutral (7.8)
- Storage: Cool, dry area
- Shelf Life: 3 years

### Untreated Evacuation Lines

Images of used and untreated evacuation lines that were found to contain large amounts of attached debris within the lumens of the lines.



### Treated Evacuation Line Testing Results<sup>1</sup>

New evacuation lines were installed and treated over a 2 month period

#### Crosstex SaniVac™

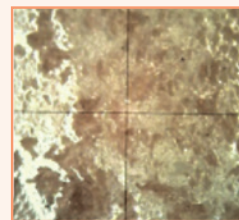
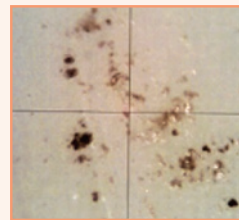
After 1 Month



After 2 Months



#### Leading Evacuation System Cleaner



**Summary: The use of SaniVac Evacuation System Cleaner resulted in little to no accumulated debris on the inner tubing walls.**

<sup>1</sup> Study on File.

<sup>2</sup> EPA Best Management Practices for Dental Amalgam Waste

Crosstex® and SANI Vac™ are trademarks and registered trademarks of Crosstex International, Inc.