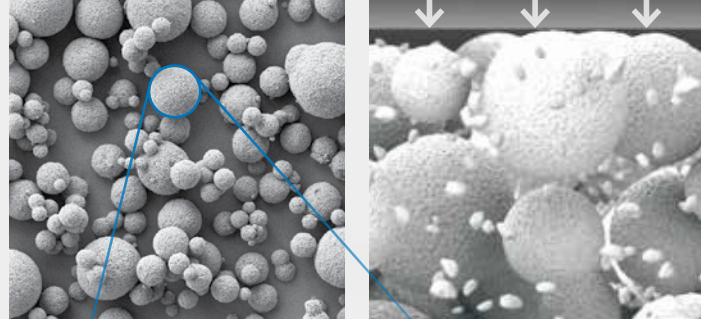


SEM picture of SphereTEC™ spherical prepolymerized fillers. Their shape and size distribution create a ball bearing-like effect that enables excellent adaptation and sculptability.



The micro-granulated structure of SphereTEC™ filler is able to bind more free resin compared to usual fillers. Therefore TPH Spectra® ST composite does not stick to hand instruments.

TPH Spectra® ST universal composite with SphereTEC™ Technology.

Made with what matters.

Magnification of a 15 micron diameter SphereTEC™ filler particle

The key improvements in TPH Spectra® ST composite were made possible by SphereTEC™ filler technology, our proprietary method of manufacturing microscaled, well-defined spherical superstructures, comprised of submicron glass. The SphereTEC™ fillers' morphology, particle size distribution and surface microstructure deliver the benefits that really matter to dentists:



OPTIMIZED HANDLING

for easy placement and shaping



ENHANCED CHAMELEON BLENDING ABILITY

for simplified shade selection and matching



IMPROVED DURABILITY

with high polish and stain resistance for lasting esthetics

TPH Spectra® ST

Universal Composite Restorative

Ordering Information

INTRODUCTORY KIT LV

40 LV Compules® Tips (Blue) Assorted - (0.25g each)
 5 Shade A1
 10 shade A2
 10 Shade A3
 5 shade A3.5
 5 shade A4
 5 shade BW
 Compules Tips Gun
 Shade Guide
 i-shade label

642000



INTRODUCTORY KIT HV

40 HV Compules® Tips (Gray) Assorted - (0.25g each)
 5 Shade A1
 10 shade A2
 10 Shade A3
 5 shade A3.5
 5 shade A4
 5 shade BW
 Compules Tips Gun
 Shade Guide
 i-shade label

642004



LV Refills

Shades
 A1 (= VITA® shades A1; B1; C1)
 A2 (= VITA® shades A2; B2; D2)
 A3 (= VITA® shades A3; C2; D3; D4)
 A3.5 (= VITA® shades A3.5; B3; B4; C3)
 A4 (= VITA® shades A4; C4)
 BW (Bleach White)

Compules® Tips

(20 x 0.25g)
 642220
 642221
 642222
 642223
 642224
 642225

Syringe

(1 x 3g)
 642460
 642461
 642462
 642463
 642464
 642465



HV Refills

Shades
 A1 (= VITA® shades A1; B1; C1)
 A2 (= VITA® shades A2; B2; D2)
 A3 (= VITA® shades A3; C2; D3; D4)
 A3.5 (= VITA® shades A3.5; B3; B4; C3)
 A4 (= VITA® shades A4; C4)
 BW (Bleach White)

Compules® Tips

(20 x 0.25g)
 642231
 642232
 642233
 642234
 642235
 642236

Syringe

(1 x 3g)
 642470
 642471
 642472
 642473
 642474
 642475



Shade Guide Refill

1 Shade Guide Holder
 6 shade guide tabs (A1, A2, A3, A3.5, A4, BW)

642013



COMPULES TIPS GUN

1 Compules Tips Gun

635105



NEW
 with SphereTEC™
 Filler Technology

THE NEWEST BREAKTHROUGH
 IN COMPOSITE TECHNOLOGY
 BEGAN WITH A QUESTION:

WHAT MATTERS TO YOU?

Magnification of a 15 micron diameter SphereTEC™ filler particle

TPH Spectra® ST
 Universal Composite Restorative

We didn't just add SphereTEC™ filler to TPH Spectra® composite, we added more of **what matters to you.**

TPH Spectra® ST Universal Composite Restorative

When we set out to improve TPH Spectra® universal composite, we asked clinicians what matters most to them. Certainly, it needs to be durable. But could the material handle better to save you time and frustration during placement? And what if shade selection was simplified, minimizing stock and creating efficiencies during the procedure? Could this composite offer outstanding stain resistance to keep patients satisfied? **Introducing TPH Spectra® ST, composite made to deliver what matters to you.**

74% of dentists complain about handling properties of composites such as adaptability and stickiness.²

efficiency matters

Versatile handling, made even easier to work with. Thanks to new SphereTEC™ filler technology, TPH Spectra® ST composite offers optimized handling characteristics in both a high and low viscosity to accommodate your preference and technique for placement efficiency.

- Doesn't stick to hand instruments
- Adapts easily to cavity surfaces
- Easy to sculpt and shape
- Excellent slump resistance



longevity matters

Esthetic results made even more durable. With 24 years and over 174 million restorations placed, the TPH® brand has a proven record of long-term clinical success. New SphereTEC™ filler takes that performance to the next level.

- Excellent stain resistance
- 60% improved wear resistance

57% of dentists frequently see composite staining at recall appointments.⁵

esthetics matter

Dentists spend up to 28% of Class II chair time on shade selection and finishing.¹

Exceptional esthetics, made even easier to create. SphereTEC™ filler brings an enhanced chameleon blending ability to TPH Spectra® ST composite for simplified shade matching. It also enables faster finishing and polishes to an excellent luster.

- Five CLOUD shades cover the full VITA® range³
- Save money and shelf space by reducing inventory
- Polish to a high gloss, faster with the Enhance® Finishing and Enhance® PoGo® Polishing systems



80% of patients are reportedly aware of color differences between restored and adjacent natural teeth.⁴



FIVE CLOUD SHADES
VITA® Shades¹

A1			A2			A3			A3.5			A4		+ BW (BLEACH WHITE)	
A1	B1	C1	A2	B2	D2	A3	C2	D3	D4	A3.5	B3	B4	C3	A4	C4

TPH Spectra® ST Composite with its new SphereTEC™ filler technology is made for what matters to you.

1. Data on file. 2. Dentsply Sirona Restorative, Europe composite user survey 2015, n=297. 3. VITA is not a registered trademark of Dentsply Sirona. 4. Joiner, 2004. 5. Class II Composite Insights, Greater New York Dental Show Survey, 2016.