

GLASSES FOR ORAL CANCER CURING LIGHT EXPOSED SCREENING

Early screening for oral cancer can save lives.

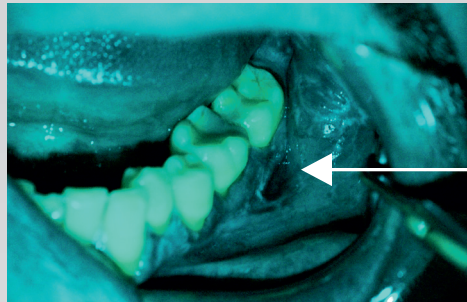


Naked eyes vision



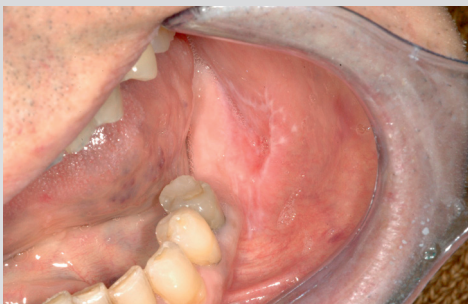
Oral lichen planus

GOCCLES® vision

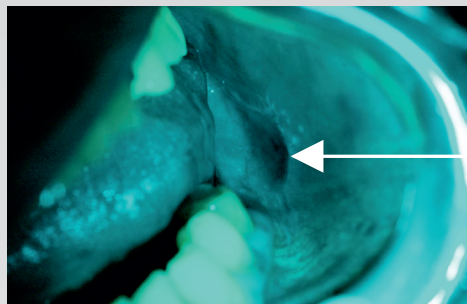


GOCCLES® is an optical device that helps with oral cancer detection.

Enables the observation of the fluorescence of healthy mucosa and distinguishes suspicious lesions, which will appear as dark areas on a green background.



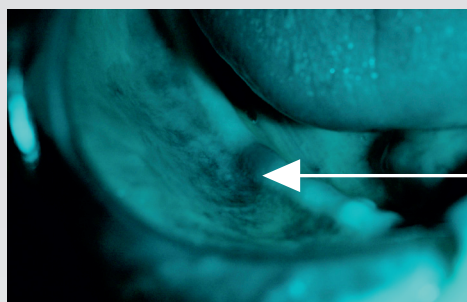
Erythroleukoplakia



GOCCLES® consists of eyewear with a special optical filter to be used in combination with any curing light available in every dental office, allowing an examination of the oral cavity to detect suspicious pre-cancerous dysplastic / anaplastic lesions.



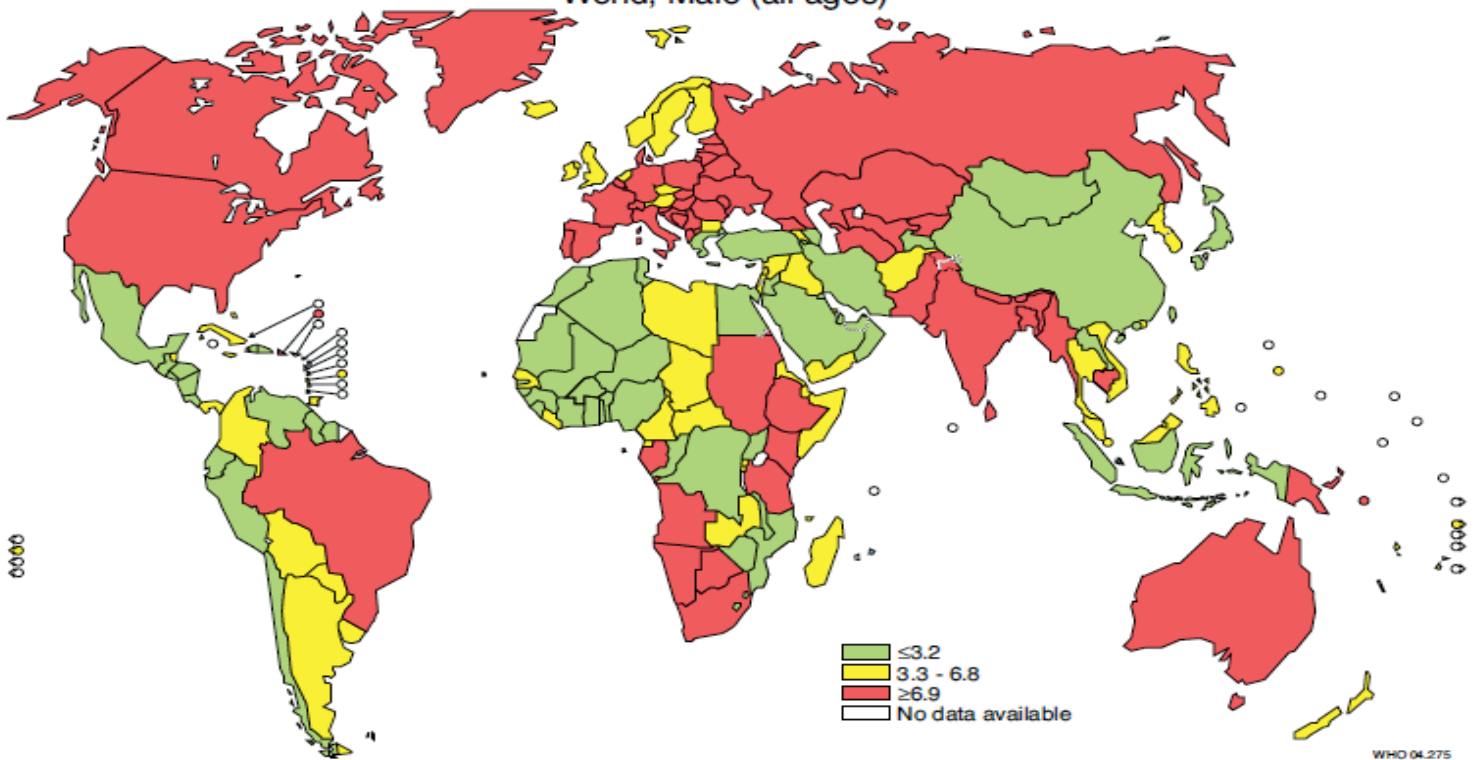
New lesion on a patient previously operated



GOCCLES®

GLASSES FOR ORAL CANCER CURING LIGHT EXPOSED SCREENING

Incidence of oral cavity cancer (ICD-10: C00-C08)
Age-standardized rate (ASR) per 100 000 world standard population
World, Male (all ages)

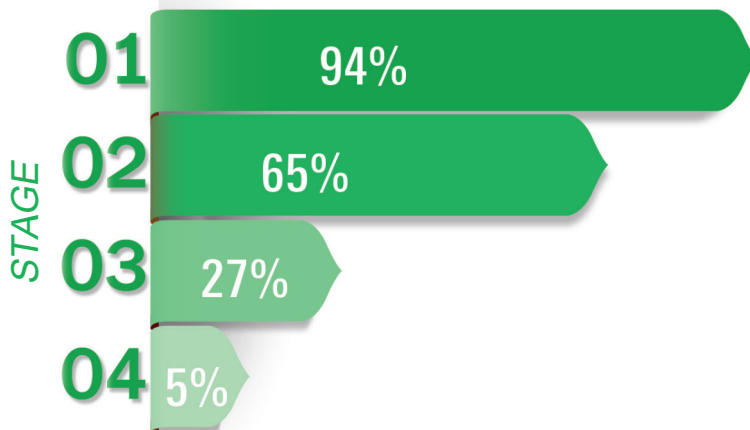


90%

Oral cancer is one of the most common cancers in the world. **Early detection** of oral cancer results in a survival rate of 90%.

Delayed diagnosis means a reduction in survival rates.

SURVIVAL 5 YEARS FROM DIAGNOSIS



Fight oral cancer to **save** lives. GOCCLES® is Pierrel's contribution to **Oral Cancer Early Screening**.



For more information www.goccles.com or contact us at orabloc@pierrelgroup.com