

# **KATANA™ Zirconia Block**

A new solution for zirconia restorations

## THE FUTURE AND SOLUTION OF INNOVATIVE ZIRCONIA FEATURES TRANSLUCENCY SIMILAR TO NATURAL TOOTH ENAMEL BY SPEED SINTERING

The collaboration of Kuraray Noritake Dental's superior materials technology and Dentsply Sirona's CEREC SpeedFire<sup>\*1</sup> now makes it possible to speed sintering process full zirconia restorations (30 minutes).

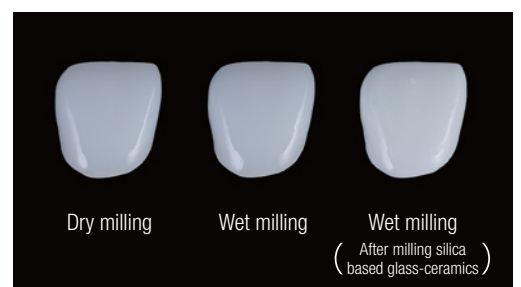
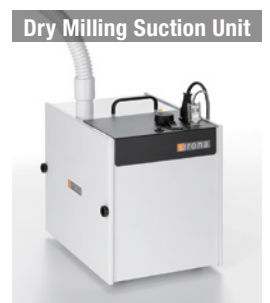


\*1 This product is exclusively for use with CEREC \*2 CEREC software 4.5.2 is necessary \*3 In a case involving a crown(dry milling)

## IMPORTANT POINTS TO KEEP IN MIND WHEN BEGINNING TO USE KATANA™ ZIRCONIA BLOCK

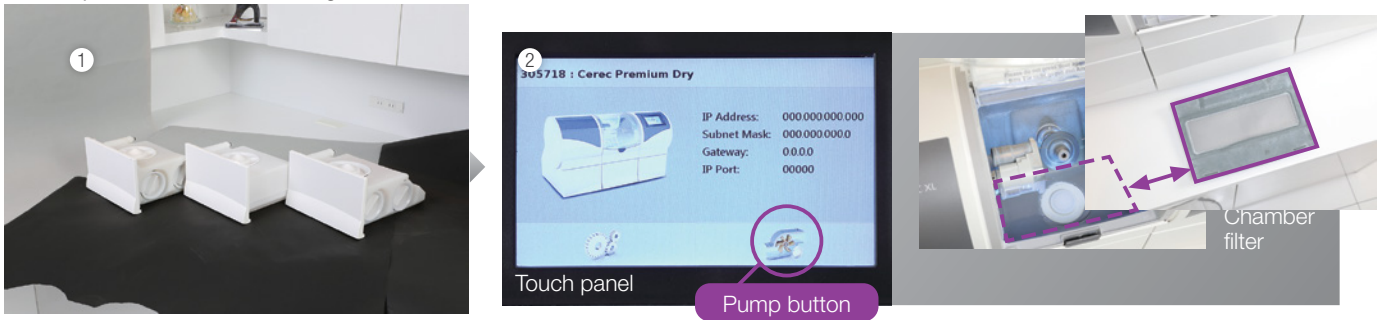
It is recommended to perform **dry-milling** using the Dry Milling Suction Unit (Dentsply Sirona). For details, consult Dentsply Sirona Inc.

If **wet milling** is performed using cooling water contaminated by milling material other than zirconia (i.e., silica-based glass ceramic, such as lithium disilicate glass, etc.), the translucency of the prosthesis may be diminished after baking. Before milling, it is necessary to clean the milling/grinding chamber; cooling-water tanks and filters; change the cooling water and clean the inside of the pump. It is good practice to have three tanks, for more efficient performance of the wet milling operation. See the information on the reverse side of this brochure.



## WET-MILLING USING MULTIPLE TANKS

Replace the CEREC milling unit tanks as follows:

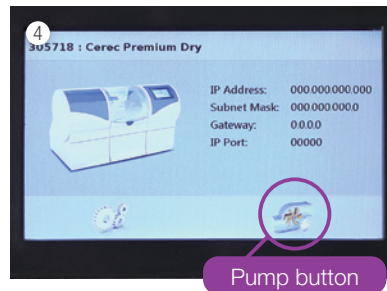


Prepare a tank to hold cooling water for silica-based glass ceramic milling (the glass ceramic cooling-water tank); a tank to hold cooling water for zirconia milling (the zirconia cooling-water tank); and a tank to hold tap water for washing the inside of the pump (the wash water tank).

Set up the glass ceramic cooling-water tank. Press the Pump button on the touch panel to wash away any glass ceramic powder that is inside the milling chamber. Then, thoroughly flush milling debris from the milling chamber filter and milling powder from beneath the milling chamber filter.



Remove the glass ceramic cooling-water tank and install the wash water tank.



Press the Pump button on the touch panel to wash the inside of the pump.



Remove the wash water tank\* and install the zirconia cooling-water tank. Then, switch the device to the wet milling mode before starting milling.

\* The tap water in the wash water tank should be discarded

## WHEN MILLING A SILICA-BASED GLASS CERAMIC BLOCK AFTER MILLING A ZIRCONIA BLOCK

Remove the zirconia cooling-water tank and install the glass ceramic cooling-water tank. Switch the device to the wet milling mode before starting milling.

### YOUR CONTACT

#### Kuraray America, Inc.

33 Maiden Ln Phone (800) 879-1676  
Suite 600D Fax (888) 700-5200  
New York, NY 10038 E-Mail info@kuraraydental.com

Website [kuraraydental.com](http://kuraraydental.com)

#### Manufacturer:



#### Kuraray Noritake Dental Inc.

300 Higashiyama, Miyoshi-cho, Miyoshi, Aichi 470-0293, Japan  
Website [www.kuraraynoritake.com](http://www.kuraraynoritake.com)

- Before using this product, be sure to read the Instructions for Use supplied with the product.
- The specifications and appearance of the product are subject to change without notice.
- Printed color can be slightly different from actual color.

"KATANA" and "CERABIEN" are trademarks of Noritake Co., Ltd.  
"PANAVIA" and "CLEARFIL" are trademarks of Kuraray Co., Ltd.  
"CEREC" and "SpeedFire" are trademarks of Dentsply Sirona Inc.

R& Only

